

ROAD BLOCKER

RB1000CR Centurion

Avon RB1000CR Centurion Road Blocker provides a high level of security against unauthorised vehicle access.

The blocker has a 1000mm high blocking segment and is designed as a Hostile Vehicle Mitigation (HVM) solution providing protection to sites from extreme Vehicle Borne Improvised Explosive Device (VBIED) attack.

Physically impact tested in accordance with the US standard ASTM F2656 by the Motor Industry Research Association (MIRA), achieving an M50 P1 rating and remaining operational after impact.

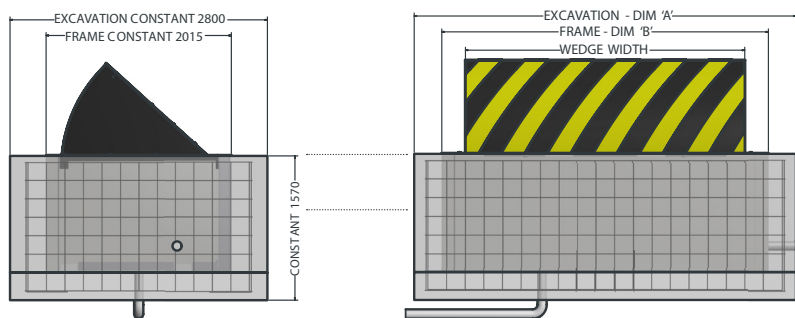
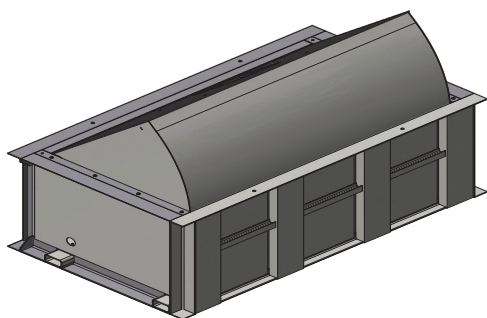
The blocker is also available as an optional HCIS Road Blocker specifically designed to comply with the Kingdom of Saudi Arabia's (KSA) Ministry of Interior, HCIS Security Directives for crash barriers.



t: +44 (0) 117 953 5252
e: sales@avon-barrier.com
w: www.avon-barrier.com



PRODUCT SPECIFICATION



RB1000CR ASTM ROAD BLOCKER WIDTH OPTIONS		
WEDGE WIDTH	DIM 'A'	DIM 'B'
2M	3100	2508
3M	4100	3508
4M	5100	4508
5M	6100	5508

FEATURES

- » Physically impact tested ASTM F2656 M50 P1
- » Manufactured from heavy gauge materials
- » Manual hand pump facility
- » Programmable logic control system
- » 100% duty cycling
- » Fully clad base

BENEFITS

- » Confidence in proven performance
- » Strong and durable
- » Operational under power failure conditions
- » Flexibility to interface with all forms of access control
- » Reliable and dependable
- » Simple to install

Physical Dimensions:	3m Road Blocker: W - 3508mm D - 2015mm H - 1280mm
Raised height of blocking segment:	1000mm
Blocker widths available:	2000-5000mm in 500mm increments
Physical Dimensions HPU Cabinet (single):	W - 640/940mm D - 670mm H - 1300mm
Basic Power Requirements:	3-Phase 380/415V AC, 50/60Hz
Control Voltage:	S.E.L.V 24v
Performance:	Loading 30 Tonnes
ASTM Classification:	ASTM F2656-07 M50 P1
Tested Model:	3 Metre blocking segment 1m high blocking segment (raised)
Speed of Operation:	6 Seconds to raise or lower (alternative speeds available as option)
Emergency Fast Raise (option):	<1.5 seconds to raise Emergency Fast Operation (EFO)
Operating temperature ranges available (option):	-25°C - +75°C (variables available as options)

OPTIONS AVAILABLE

- » Fully compliant HCIS road blocker
- » Emergency fast raise system
- » Emergency buttons with lock down
- » LPS 1175 cabinets available for HPU
- » Speed of operation 3-5 Seconds
- » Access and intercom systems
- » UPS backup for the electrical system
- » Operating temperatures & environments
- » Interlocking systems to give air-lock type protection on sites with higher threat levels
- » Inductive loop systems
- » Traffic lights and back-indications systems
- » Integral inset warning lights in blocking segment
- » Accumulator systems (fail secure) for hydraulic operation in power failure conditions
- » Operating humidity range 5%-100% (non condensing)