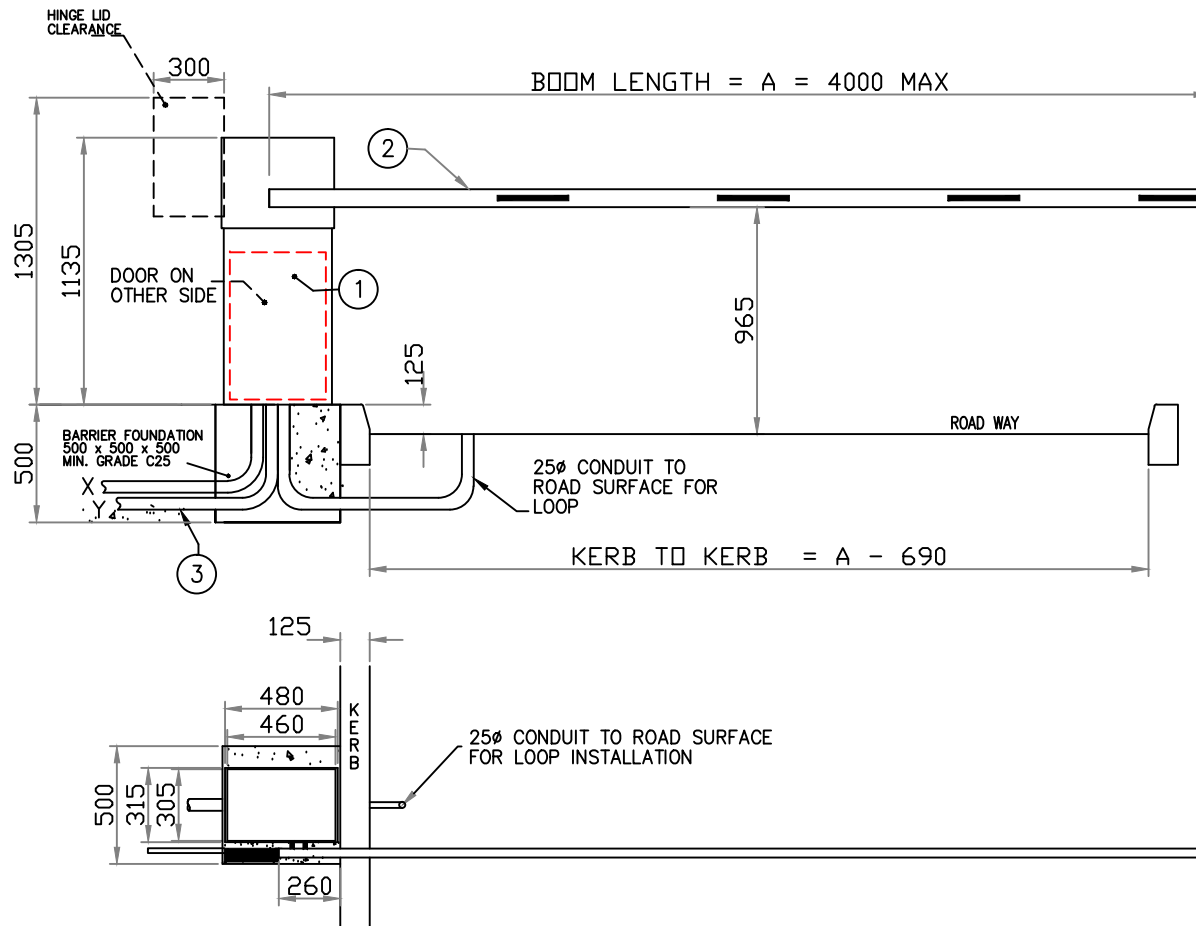


COUNTERWEIGHTS TO SUIT CUSTOMER REQUIREMENTS:  
I.E. LIGHT(S), SKIRT,  
STOP SIGNS, POGO.



**LEGEND:**

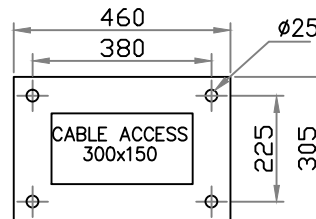
- ELECTRO-MECHANICAL BARRIER EB450 PARKING MOTOR 0.375KW 230V 50HZ DIRECT DRIVE VIA GEARBOX, CONTROL VOLTAGE 24V DC. WINDING HANDLE FACILITY IN THE EVENT OF A POWER FAILURE. HINGED TOP LID (OPTIONALLY REMOVABLE). LOCKABLE SIDE COVER. 4xM12x160 CHEMICAL ANCHORS.
- BOOM-RECTANGULAR SHAPED ALUM. 76x38mm, POWDER COATED WHITE, RED REFLECTIVE STRIPES 60x350mm AT 750mm CENTRES WITH REINFORCEMENT AT FIXING POINT.

3. ALL DUCTING TO BE 50ø MIN. UNLESS OTHERWISE SPECIFIED.

**CABLE DETAILS**

X DENOTES MAINS SUPPLY 230V 1PH 6AMP. 3x2.5mm<sup>2</sup>

Y DENOTES CONTROL CABLE PUSH BUTTONS 6x1.5mm<sup>2</sup> SUBJECT TO SITE CONDITIONS.

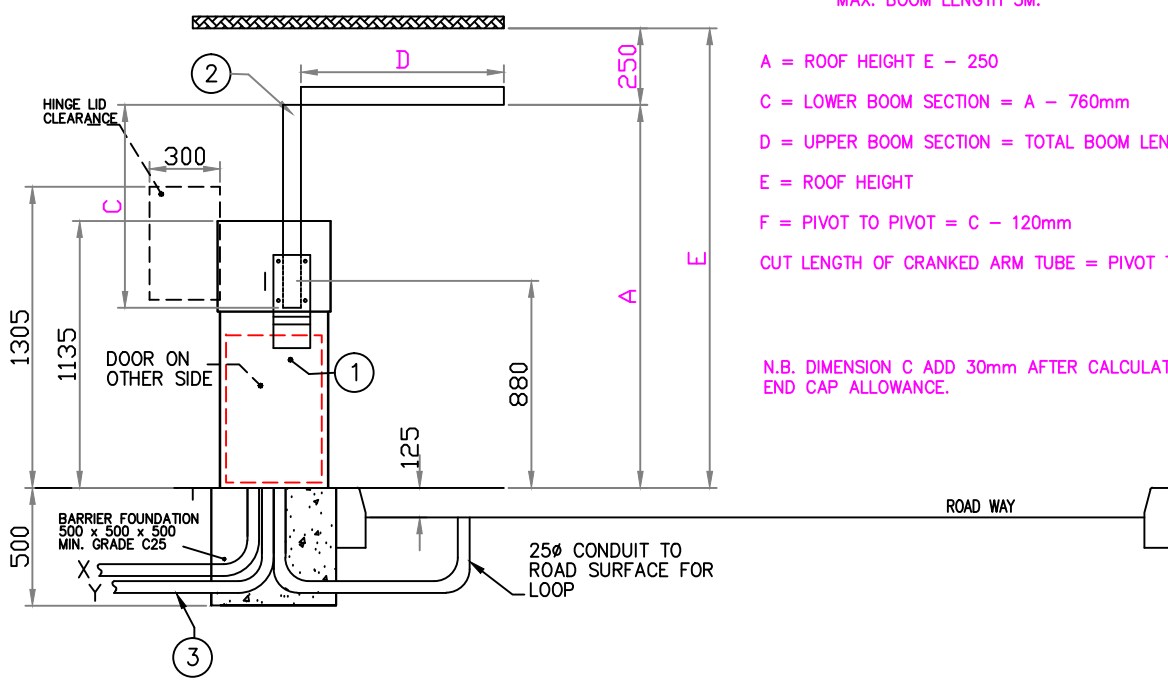


ISSUE	REVISION	SIG.	DATE
B	C25 WAS CP25	M.J	10/5/13
A	MOD TO 50/5/010	.	15/11/05

1st ANGLE PROJECTION		Tolerances	Used on	Drawn	Traced	Checked	Approved	Date	Scale
COMPUTER GENERATED DO NOT ALTER BY HAND		.	.	M.J	.	.	.	11/05	NTS
				Drawing No.	Shl.	of	Rev.		
				EB450-6-01	1	1	B		

Avon Barrier Corporation Ltd.  
149 South Liberty Lane,  
Ashton Vale Trading Est.  
Bristol.  
BS3 2TL  
UK.  
T: +44 (0)117 953 5252  
E: technical@avon-barrier.co.uk  
W: www.avon-barrier.co.uk

Drawing Title  
AVON EB 450 PARKING BARRIER,  
FOUNDATION DETAIL  
(NO C/W NO END STEADY )  
GENERAL ARRANGEMENT.



MAX. BOOM LENGTH 3M.

- A = ROOF HEIGHT E - 250
- C = LOWER BOOM SECTION = A - 760mm
- D = UPPER BOOM SECTION = TOTAL BOOM LENGTH - C
- E = ROOF HEIGHT
- F = PIVOT TO PIVOT = C - 120mm
- CUT LENGTH OF CRANKED ARM TUBE = PIVOT TO PIVOT F - 200mm

N.B. DIMENSION C ADD 30mm AFTER CALCULATIONS FOR END CAP ALLOWANCE.

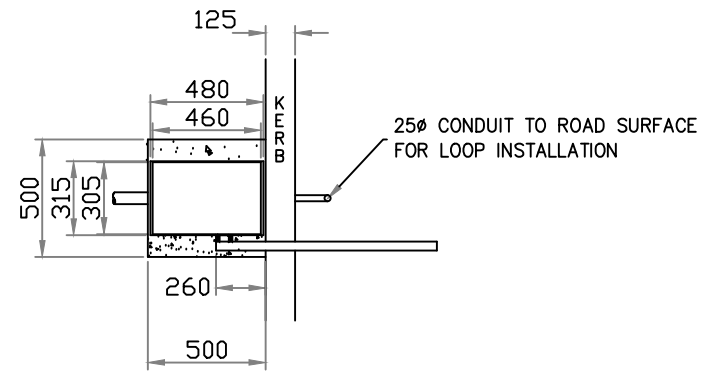
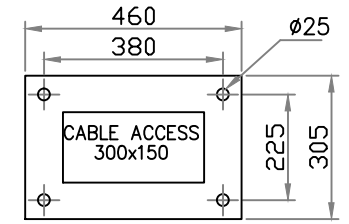
**LEGEND:**

1. ELECTRO-MECHANICAL BARRIER EB450 PARKING MOTOR 0.375KW 230V 50HZ DIRECT DRIVE VIA GEARBOX, CONTROL VOLTAGE 24V DC. WINDING HANDLE FACILITY IN THE EVENT OF A POWER FAILURE. HINGED TOP LID (OPTIONALLY REMOVABLE). LOCKABLE SIDE COVER. 4xM12x160 CHEMICAL ANCHORS.
2. BOOM-RECTANGULAR SHAPED ALUM. 76x38mm, POWDER COATED WHITE, RED REFLECTIVE STRIPES 60x350mm AT 750mm CENTRES WITH REINFORCEMENT AT FIXING POINT.
3. ALL DUCTING TO BE 50ø MIN. UNLESS OTHERWISE SPECIFIED.

**CABLE DETAILS**

X DENOTES MAINS SUPPLY 230V 1PH 6AMP. 3x2.5mm<sup>2</sup>

Y DENOTES CONTROL CABLE PUSH BUTTONS 6x1.5mm<sup>2</sup> SUBJECT TO SITE CONDITIONS.



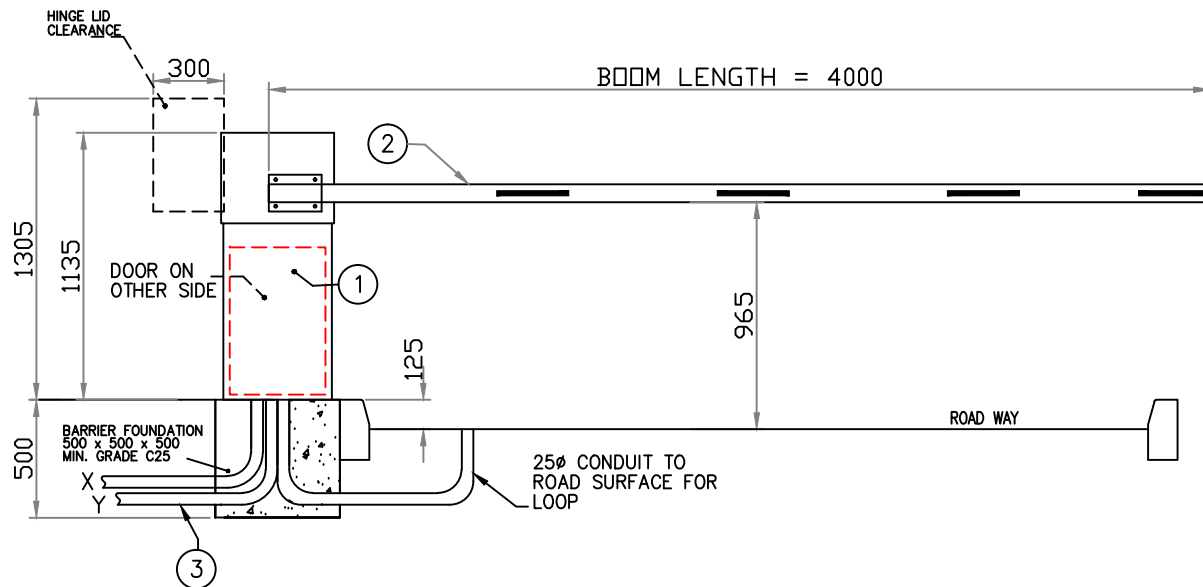
Avon Barrier Corporation Ltd.  
149 South Liberty Lane,  
Ashton Vale Trading Est.  
Bristol.  
BS3 2TL.  
UK.  
T: +44 (0)117 953 5252  
E: technical@avon-barrier.co.uk  
W: www.avon-barrier.co.uk

Drawing Title

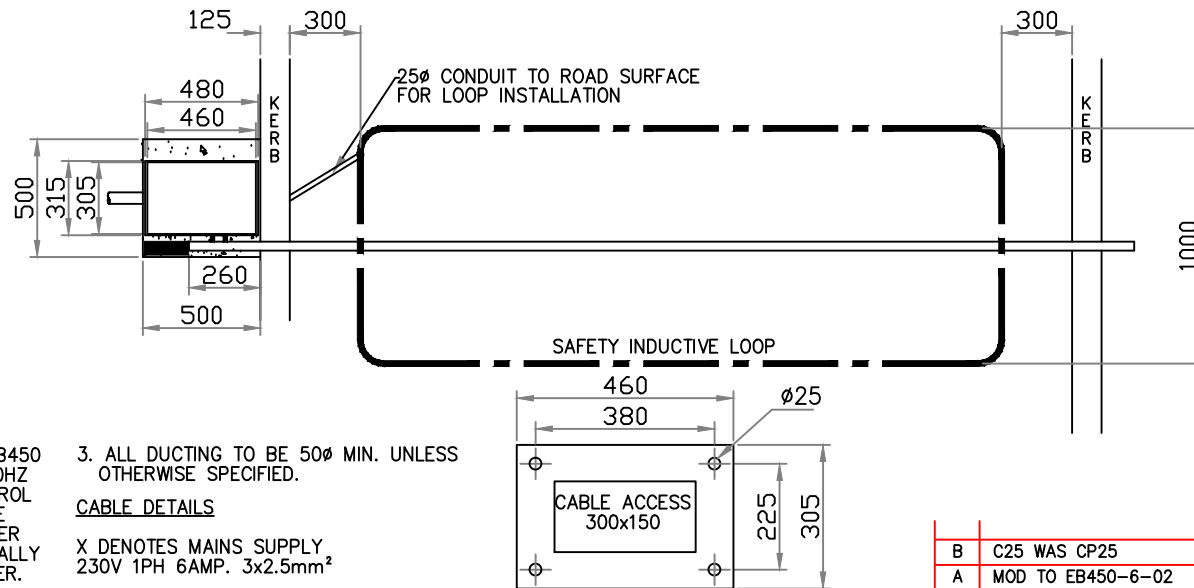
AVON EB 450 PARKING BARRIER, FOUNDATION DETAIL ARTICULATED ARM GENERAL ARRANGEMENT.

C	C25 WAS CP25	M.J	10/5/13
B	E REDEFINED	M.J	14/9/09
A	MOD TO EB450-6-01		12/2/09
ISSUE	REVISION	SIG.	DATE

1st ANGLE PROJECTION	Tolerances	Used on	Drawn	Traced	Checked	Approved	Date	Scale
			M.J	.	.	.	2/09	NTS
COMPUTER GENERATED DO NOT ALTER BY HAND	Material	Finish	Drawing No.	Shl.	of	Rev.		
	.	.	EB450-6-04	1	1	C		



COUNTERWEIGHTS TO SUIT CUSTOMER REQUIREMENTS:  
I.E. LIGHT(S), SKIRT,  
STOP SIGNS, POGO.



**LEGEND:**

- ELECTRO-MECHANICAL BARRIER EB450 PARKING MOTOR 0.375KW 230V 50HZ DIRECT DRIVE VIA GEARBOX, CONTROL VOLTAGE 24V DC. WINDING HANDLE FACILITY IN THE EVENT OF A POWER FAILURE. HINGED TOP LID (OPTIONALLY REMOVABLE). LOCKABLE SIDE COVER. 4xM12x160 CHEMICAL ANCHORS.
- BOOM-RECTANGULAR SHAPED ALUM. 76x38mm, POWDER COATED WHITE, RED REFLECTIVE STRIPES 60x350mm AT 750mm CENTRES WITH REINFORCEMENT AT FIXING POINT.

- ALL DUCTING TO BE 50Ø MIN. UNLESS OTHERWISE SPECIFIED.

**CABLE DETAILS**

X DENOTES MAINS SUPPLY 230V 1PH 6AMP. 3x2.5mm<sup>2</sup>

Y DENOTES CONTROL CABLE PUSH BUTTONS 6x1.5mm<sup>2</sup> SUBJECT TO SITE CONDITIONS.

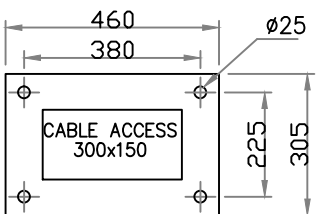
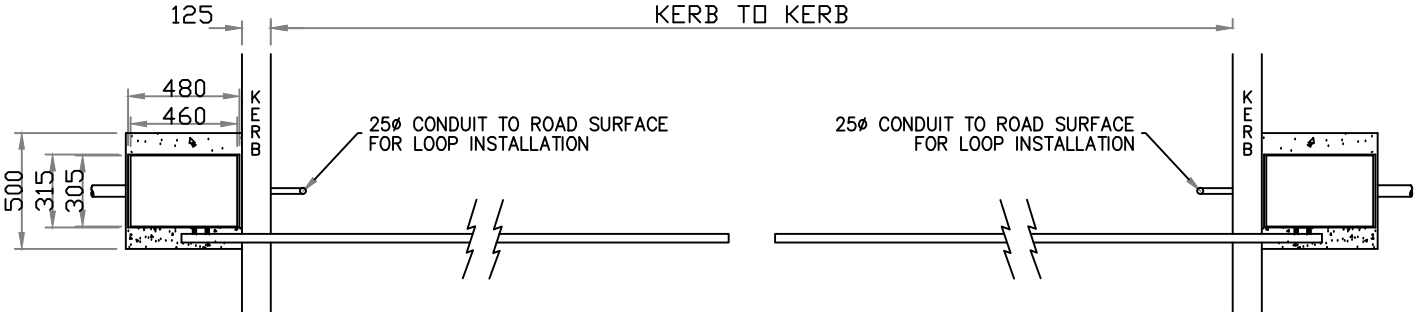
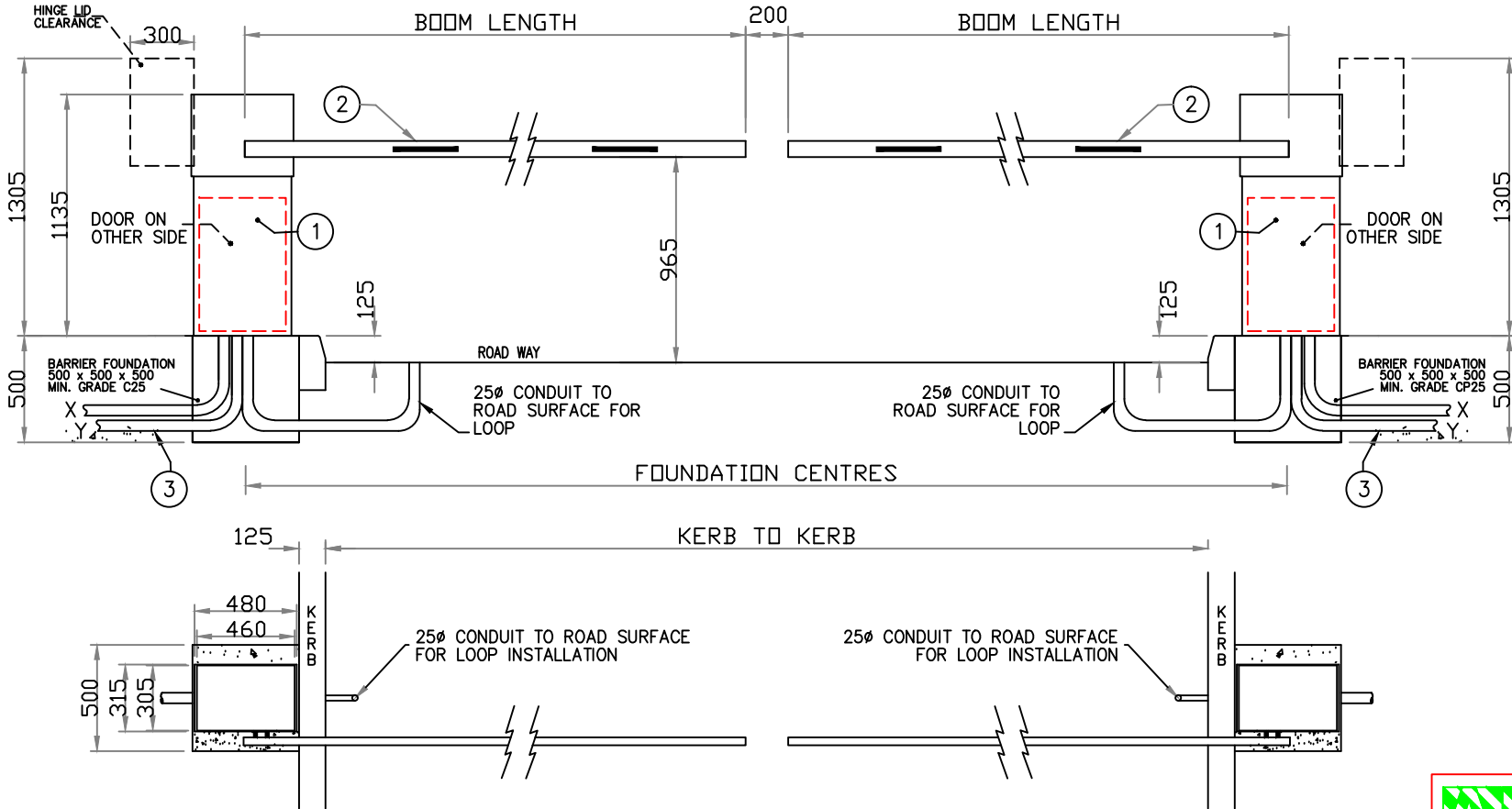


Avon Barrier Corporation Ltd.  
149 South Liberty Lane,  
Ashton Vale Trading Est.  
Bristol.  
BS3 2TL.  
UK.  
T: +44 (0)117 953 5252  
E: technical@avon-barrier.co.uk  
W: www.avon-barrier.co.uk

Drawing Title  
AVON EB 450 PARKING BARRIER,  
FOUNDATION DETAIL  
(NO C/W NO END STEADY )  
GENERAL ARRANGEMENT.

B	C25 WAS CP25	M.J	20/11/08
A	MOD TO EB450-6-02		20/11/08
ISSUE	REVISION	SIG.	DATE

1st ANGLE PROJECTION	Tolerances	Used on	Drawn	Traced	Checked	Approved	Date	Scale
COMPUTER GENERATED DO NOT ALTER BY HAND	Material	Finish	M.J	.	.	.	11/08	NTS
			Drawing No.	Sh.	of	Rev.		
			EB450-6-03	1	1	B		



**LEGEND:**

- 1. ELECTRO-MECHANICAL BARRIER EB450 PARKING MOTOR 0.375KW 230V 50HZ DIRECT DRIVE VIA GEARBOX, CONTROL VOLTAGE 24V DC. WINDING HANDLE FACILITY IN THE EVENT OF A POWER FAILURE. HINGED TOP LID (OPTIONALLY REMOVABLE). LOCKABLE SIDE COVER. 4xM12x160 CHEMICAL ANCHORS.
- 2. BOOM-RECTANGULAR SHAPED ALUM. 76x38mm, POWDER COATED WHITE, RED REFLECTIVE STRIPES 60x350mm AT 750mm CENTRES WITH REINFORCEMENT AT FIXING POINT.
- 3. ALL DUCTING TO BE 50ø MIN. UNLESS OTHERWISE SPECIFIED.

**CABLE DETAILS**

X DENOTES MAINS SUPPLY 230V 1PH 6AMP. 3x2.5mm<sup>2</sup>  
 Y DENOTES CONTROL CABLE PUSH BUTTONS 6x1.5mm<sup>2</sup> SUBJECT TO SITE CONDITIONS.

**ABC**  
 Avon Barrier Corporation Ltd.  
 149 South Liberty Lane,  
 Ashton Vale Trading Est.  
 Bristol.  
 BS3 2TL.  
 UK.  
 T: +44 (0)117 953 5252  
 E: technical@avon-barrier.co.uk  
 W: www.avon-barrier.co.uk

Drawing Title  
**EB450 TANDEM OPERATION  
 GENERAL ARRANGEMENT**

B	C25 WAS CP25	M.J	10/5/13
A	ISSUE FOR INFORMATION ONLY.		21/12/11
ISSUE	REVISION	SIG.	DATE

1st ANGLE PROJECTION		Drawn	Traced	Checked	Approved	Date	Scale
COMPUTER GENERATED DO NOT ALTER BY HAND		M.J	.	.	.	12/11	
Material	Finish	Drawing No.	Std.	of	Rev.		
.	.	EB450-6-02	1	1	B		