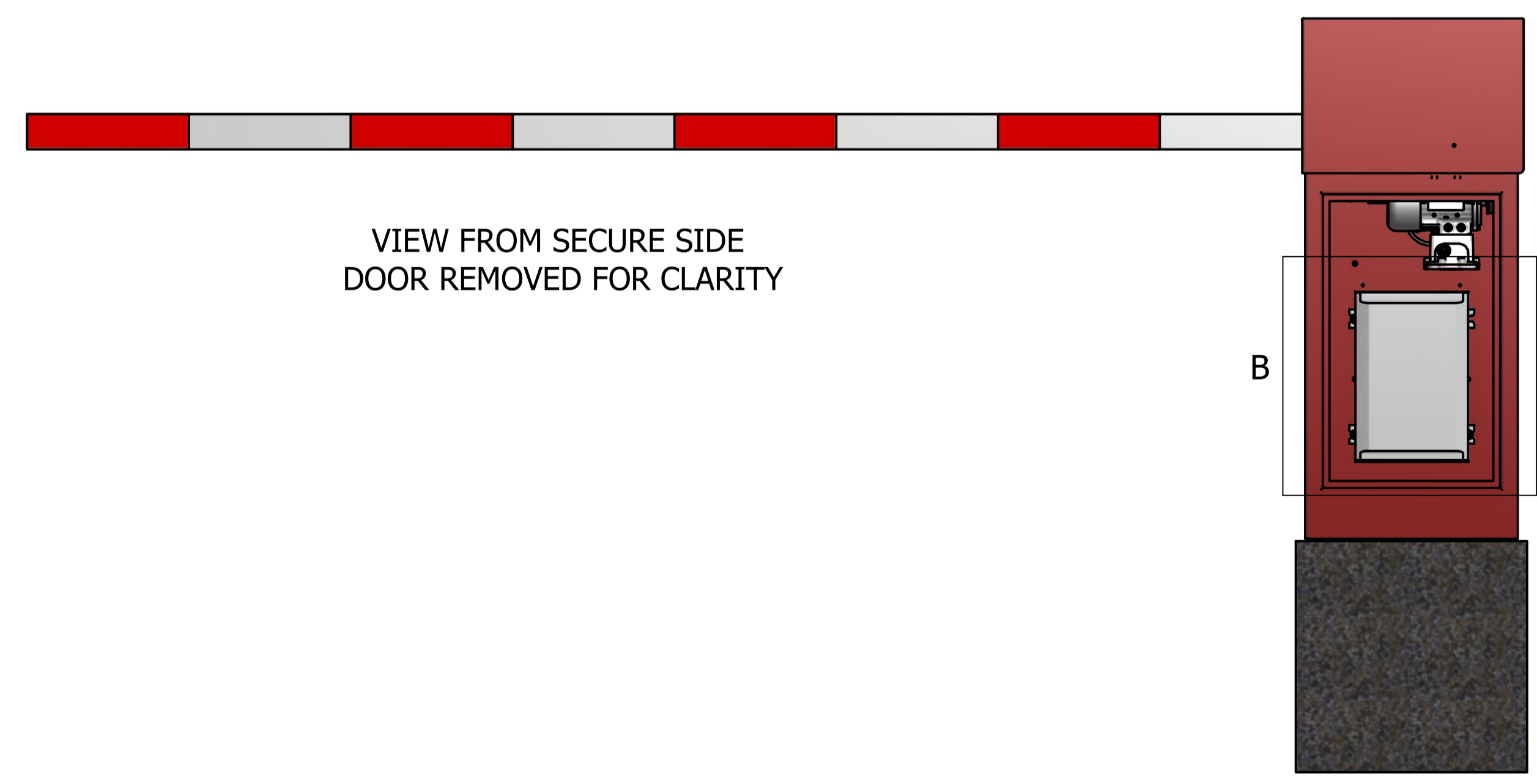
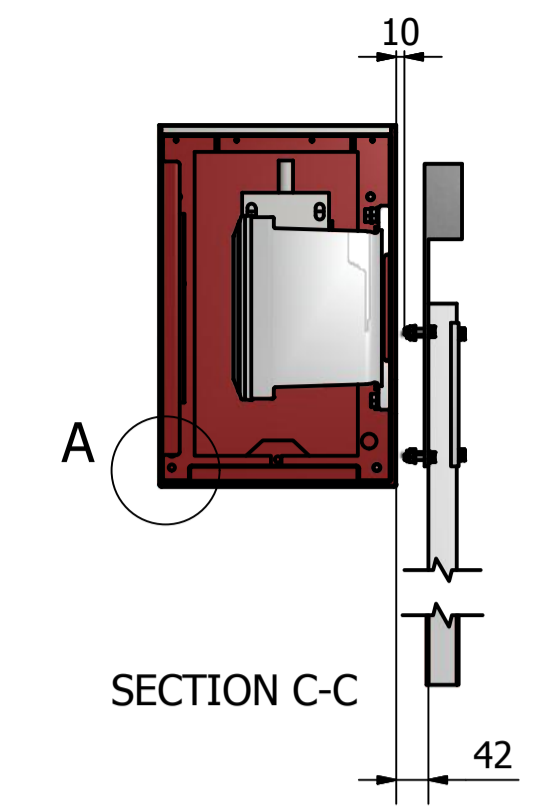
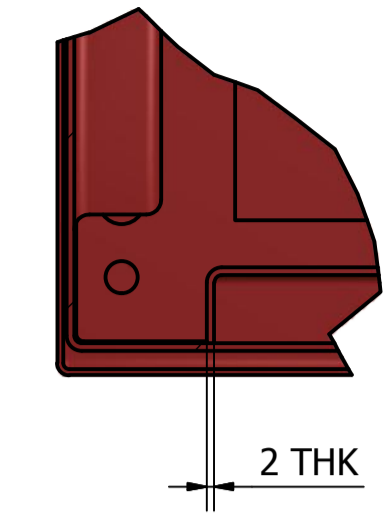


VIEW FROM SECURE SIDE

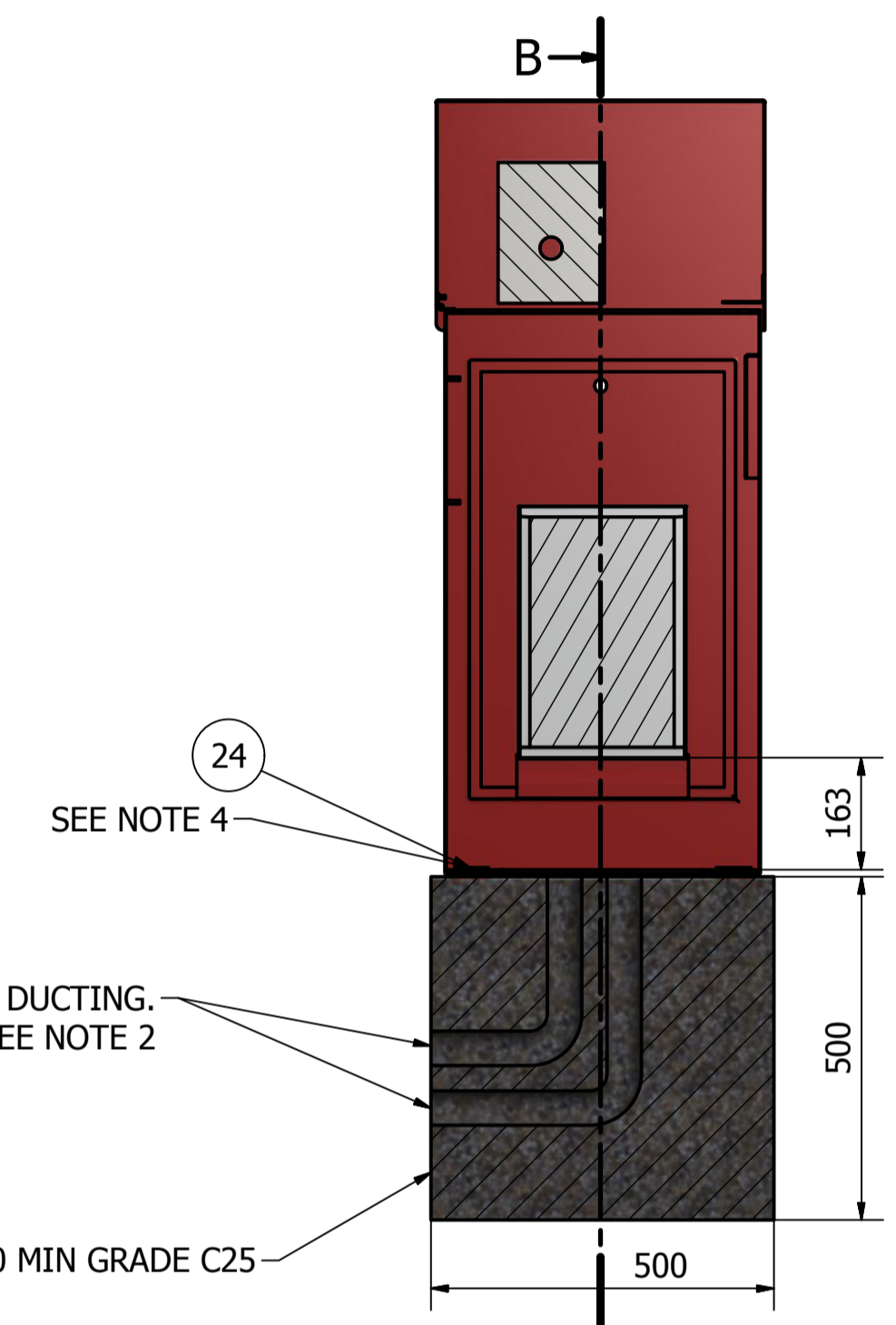


VIEW FROM SECURE SIDE  
DOOR REMOVED FOR CLARITY

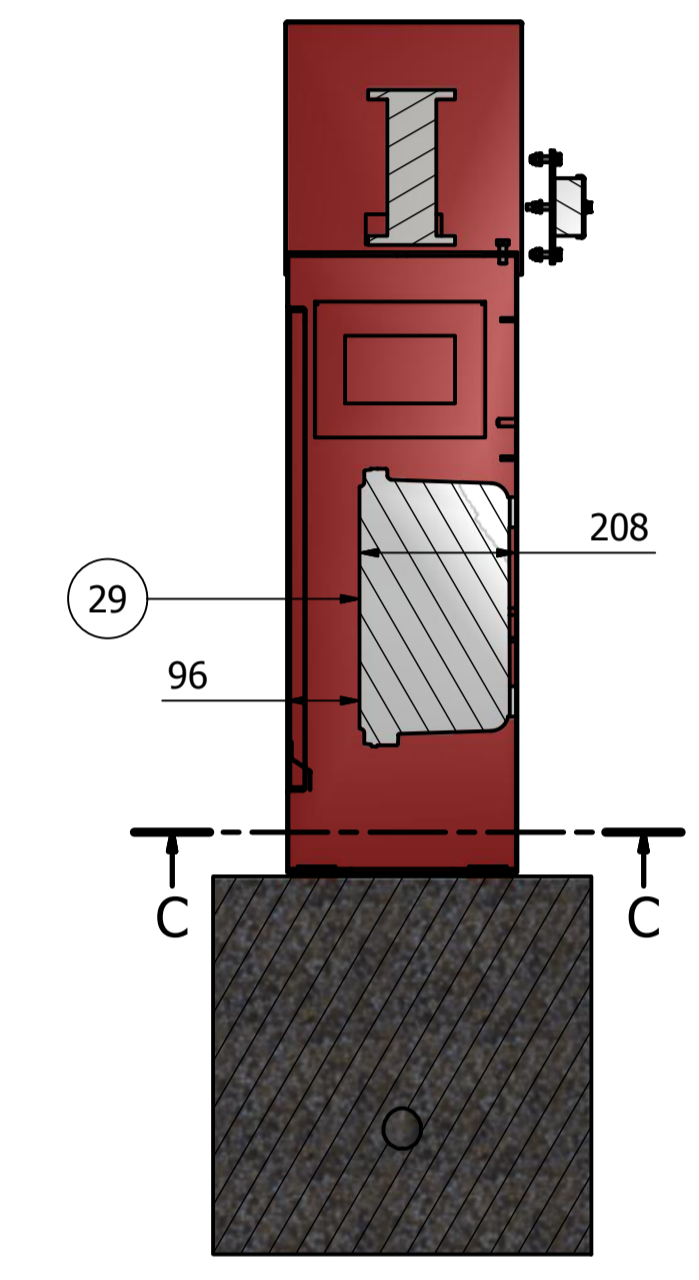
DETAIL A



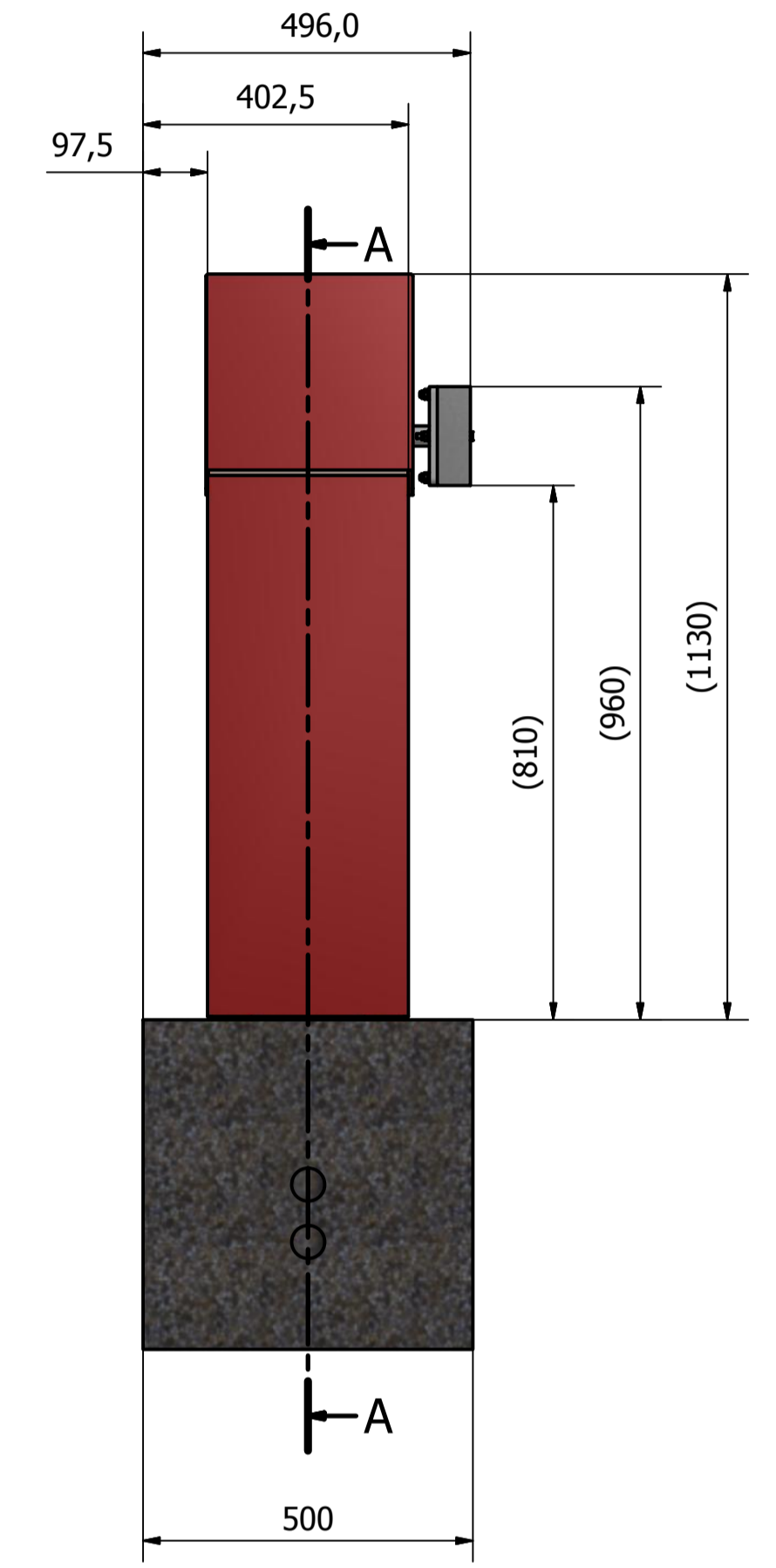
SECTION C-C



SECTION A-A  
FOUNDATION DETAILS



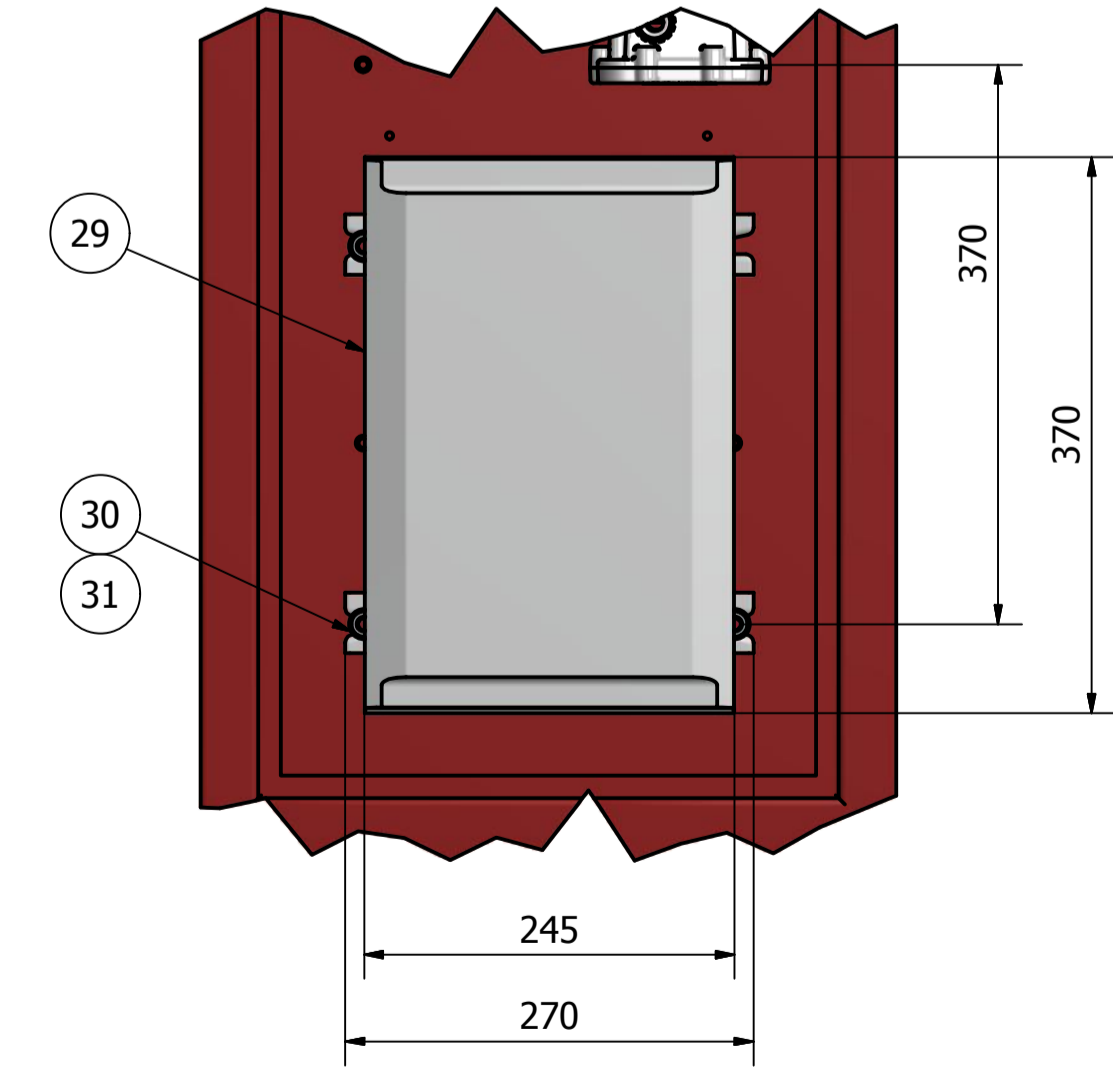
SECTION B-B  
ELECTRICAL ENCLOSURE LOCATION



MAINS AND CONTROL CABLE DUCTING.  
SEE NOTE 2


BARRIER FOUNDATION 500 X 500 X 500 MIN GRADE C25

DETAIL B



NOTE:

1. CABINET MADE FROM 2mm STEEL SHEET. PLEASE SEE DETAIL A
2. CABINET PAINTED IN RAL 3001 (SIGNAL RED)
3. ALL DUCTING TO BE Ø50 MIN UNLESS OTHERWISE STATED
4. BOOM LENGTHS FOR THE EB750 ATEX BARRIER ARE AVAILABLE IN 3m, 4m AND 5m. COUNTERWEIGHTS MAY BE NECESSARY AND WILL BE CALCULATED PER BARRIER, BASED ON BOOM LENGTH AND INSTALLED OPTIONAL EXTRAS.
5. CABINET MOUNTED ON FOUNDATION BLOCK USING 4 NUMBER M12 CHEMICAL ANCHORS

3	BOOM - CABINET CLEARANCE DIMENSION		13/07/16	Tolerances	Materials	Material Code	Finish	Mass in Kg	 <p>Complete copyright of Avon Barrier Corporation Ltd.</p>	Avon Barrier Corporation Ltd. 149 South Liberty Lane, Ashton Vale Trading Estate, Bristol. BS3 2TL. UK. T: +44 (0) 117 953 5252 F: +44 (0) 117 953 5353 E: technical@avon-barrier.co.uk W: www.avon-barrier.co.uk	Designed	Designed Date	Dwg Check	Eng Check		
2	RECOMMENDED TORQUE VALUES / CABINET THK		11/05/16	± 0.3mm	SEE BOM	N/A	CABINET FINISHED IN RAL 3001 SIGNAL RED	N/A			Drawing Title	JeffParvin	16/02/2016	EB750 ATEX BARRIER GENERAL ARRANGEMENT		
1	INITIAL ISSUE		16/02/16					Drawing Number			Atex Barrier 750					
Issue	Revision	Sig	Date					Scale	Drawing Status	Sheet Size	Sheet Number	Revision				
								NTS	W.I.P.	A1	2 / 2	3				