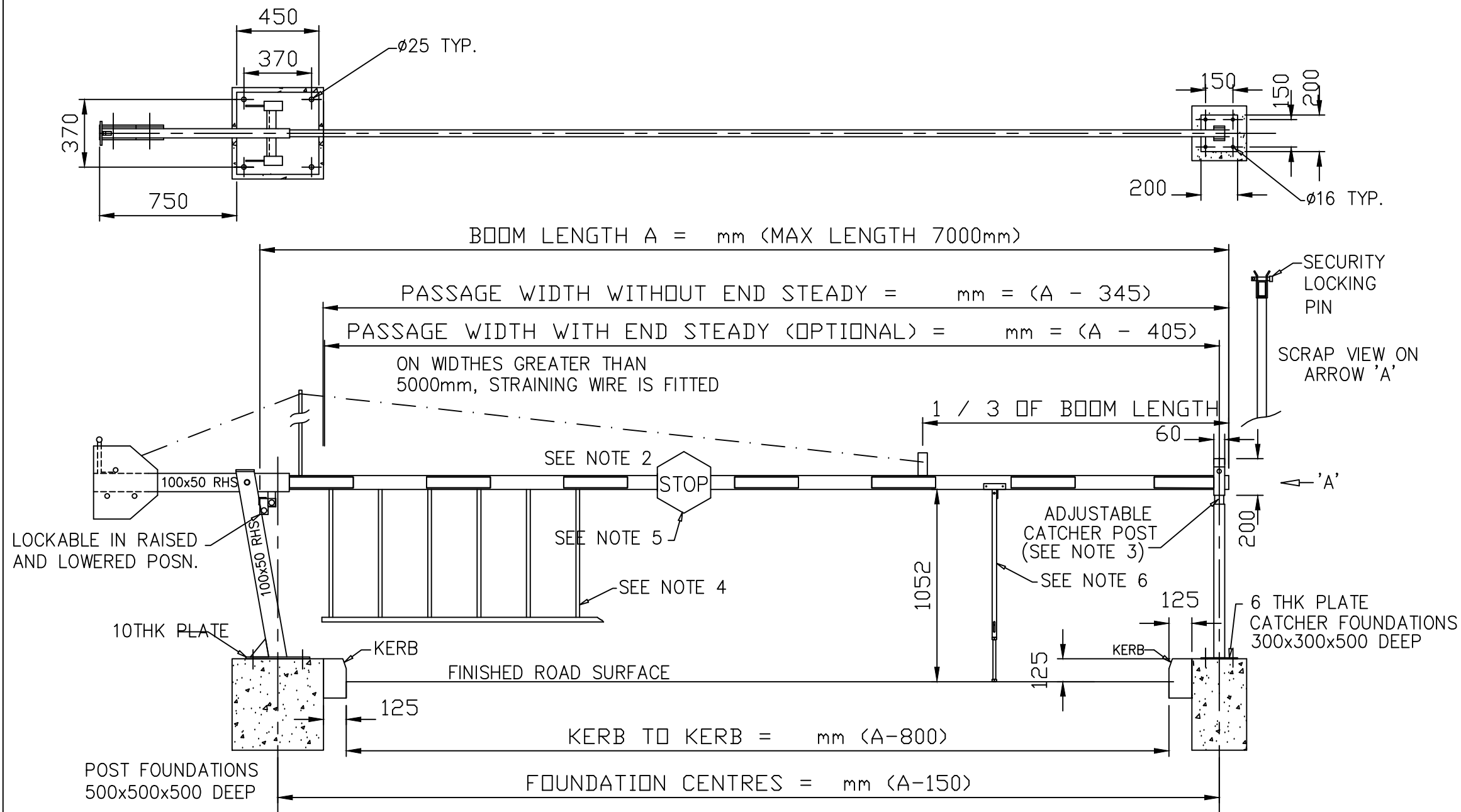


NOTES:

1. MANUAL BARRIER, POWDER COATED TO CLIENTS SPEC. SECURE WITH 4xM16x190 CHEMICAL ANCHORS.
2. BOOM RECTANGULAR ALY. 76x38mm POWDER COATED WHITE. RED FASCAL STRIPES 60x350mm AT 750mm CENTRES.
3. CATCHER POST- SECURE WITH 4xM12x160 CHEMICAL ANCHORS. CATCHER POST SHOWN IS SUPPLIED AS STANDARD.
4. BOOM MOUNTED SKIRT - UNDERSLUNG (OPTIONAL).
5. BOOM MOUNTED SIGNS - 'STOP' / 'NO ENTRY' (OPTIONAL).
6. POGO STICK, (OPTIONAL)



Avon Barrier Corporation Ltd.
 149 South Liberty Lane,
 Ashton Vale Trading Est.
 Bristol.
 BS3 2TL.
 UK.
 T: +44 (0)117 953 5252
 E: technical@avon-barrier.co.uk
 W: www.avon-barrier.co.uk

Drawing Title
**MANUAL BARRIER
 FOUNDATION G.A.**

A	PREVIOUSLY 05-04-001	M.J	21/12/04	Drawn	Traced	Checked	Approved	Date
ISSUE	REVISION	SIG.	DATE	M.J				12/04

3rd ANGLE PROJECTION	Used on	Drawing No.
		MB-100

IF IN DOUBT ASK	COMPUTER GENERATED DO NOT ALTER BY HAND	Finish	Scale	Sht.	of	Rev.
			NTS	1	1	A