

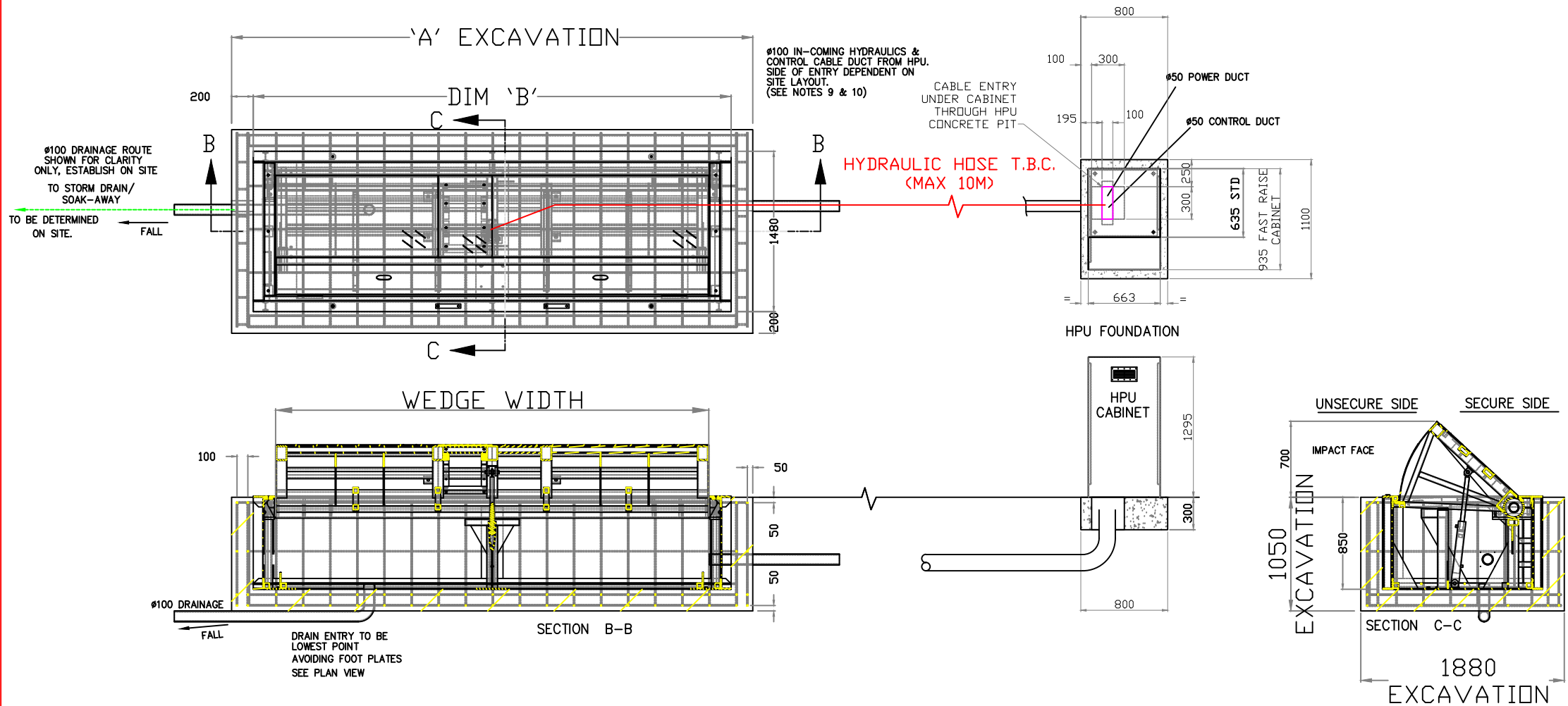


| WEDGE WIDTH | DIM 'A' | DIM 'B' |
|-------------|---------|---------|
| 1.5 | 2310 | 1910 |
| 2M | 2810 | 2410 |
| 2.5 | 3310 | 2910 |
| 3M | 3810 | 3410 |
| 3.5 | 4310 | 3910 |
| 4M | 4810 | 4410 |
| 4.5 | 5310 | 4910 |
| 5M | 5810 | 5410 |
| 6M | 6810 | 6410 |

NOTES:

1. ALL CONCRETE TO BE GRADE C35 UNLESS OTHERWISE SPECIFIED, AIR-ENTRAINED AT SURFACE.
2. THIS DRAWING IS TO BE READ IN CONJUNCTION WITH ALL RELEVANT ENGINEERS AND ARCHITECTS DRAWINGS AND SPECIFICATIONS.
3. REFER TO METHOD STATEMENT AND BLOCKER INSTALLATION MANUALS FOR FURTHER INFORMATION.
4. ALL OTHER INSTALLATION INFORMATION AS PER AVON BARRIER COMPANY INSTALLATION LITERATURE.
5. ALL CONDUIT/DUCTING #50 UNLESS SPECIFIED OTHERWISE.
6. ALL FOUNDATION LEVELS TO BE ESTABLISHED FROM FULL SITE SURVEY PRIOR TO COMMENCEMENT OF WORKS.
7. DRAINAGE TO BE IN ACCORDANCE WITH PREVAILING PROCEDURES AND INSTALLED TO INTERCEPT SOAKAWAY AS DIMENSIONED. SCUPPER TO BE POSITION AT LOWEST POINT.
8. ALL DUCTS TO BE CONSTRUCTED WITH DRAW ROPES.
9. ALL DUCTS TO BE A MIN. OF 500mm BELOW FINISHED ROAD SURFACE UNLESS OTHERWISE SPECIFIED AND MUST HAVE SMOOTH BENDS.
10. FOUNDATION TOP TO BE SLIGHTLY PROUD TO ALLOW 'RUN-OFF'.
11. CONCRETE THICKNESS TO BE 600mm.
12. BLOCKER IMPACT FACE TO BE FACING UNSECURE SIDE
13. WHERE EXISTING DRAINS / SERVICE DUCTS RUN BENEATH FOUNDATIONS SUITABLE PRECAUTIONS MUST BE TAKEN TO AVOID DAMAGE.
14. HPU POWER SUPPLY 3Pz 415V AC 50HZ 16AMP
15. HOSE SPECIFICATION SAE 100R2 AT, 3/8" DOUBLE BRAIDED.

-  FIRST POUR, PRE BLOCKER INSTALLATION. GRADE C35 CONCRETE
-  SECOND POUR, POST BLOCKER INSTALLATION. GRADE C35 CONCRETE



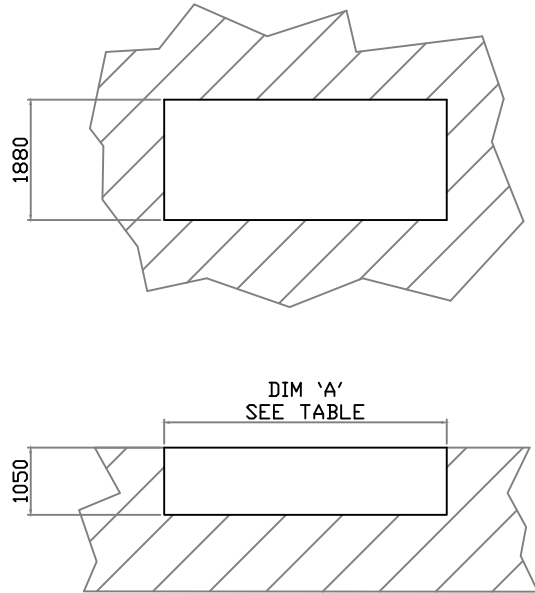
ABC
 Avon Barrier Corporation Ltd.
 149 South Liberty Lane,
 Ashton Vale Trading Est.
 Bristol,
 BS33 2TL
 UK.
 T: +44 (0)117 953 5252
 E: technical@avon-barrier.co.uk
 W: www.avon-barrier.co.uk

| ISSUE | REVISION | SIG. | DATE |
|-------|-------------------|------|----------|
| F | 6M ADDED | M.J | 23/10/12 |
| E | 1.5M ADDED | M.J | 5/7/12 |
| D | 700 WAS 680 | M.J | 13/10/11 |
| C | WIDTHS ADDED | M.J | 25/2/10 |
| B | DUCTS & HPU ADDED | M.J | 27/5/09 |

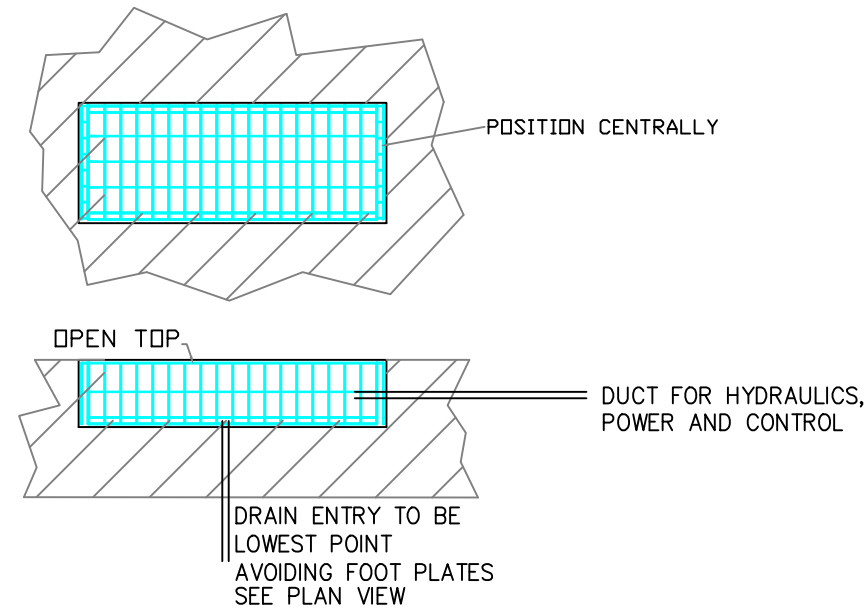
| Drawn | Traced | Checked | Approved | Date | Scale |
|-------------|--------|---------|----------|------|-------|
| M.J | | T.S | T.S | 5/09 | NTS |
| Drawing No. | Sht. | of | Rev. | | |
| RB700-101 | 1 | 1 | F | | |

IF IN DOUBT ASK
 COMPUTER GENERATED
 DO NOT ALTER BY HAND

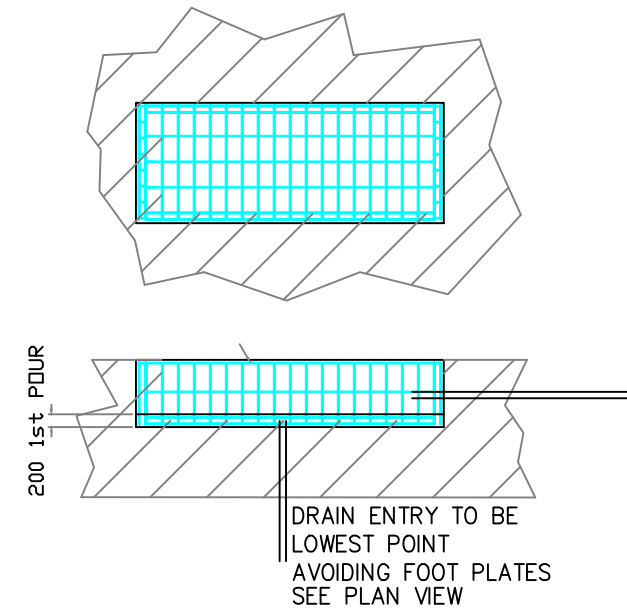
STAGE 1
EXCAVATE TO THE SIZES SHOWN
ON FOUNDATION DRAWING
RB700-101
COMPACT AND LEVEL BASE.



STAGE 2
PLACE REBAR CAGE INTO POSITION,
BRING DUCT AND DRAINAGE
TO THE CORRECT POSITIONS
SEE REBAR DRAWING 700-102

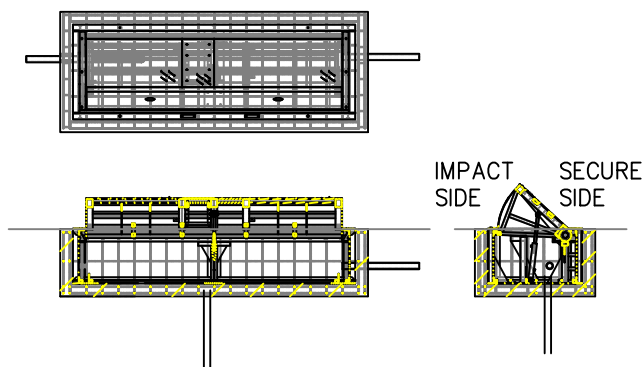


STAGE 3
FIRST POUR, ENSURE IT IS AT THE
CORRECT DEPTH FROM FINISHED
FLOOR LEVEL, TAMP TO REMOVE AIR BUBBLES.
TROWEL TO A FLAT AND LEVEL FINISH TO SUIT
CAMBER OF ROAD.

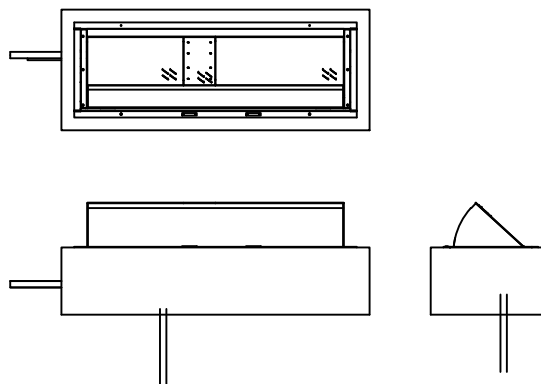


NOTES.
DRAWING MUST BE READ
IN CONJUNCTION WITH
RB700-101
(FOUNDATION DRAWING)
AND
RB700-102 (REBAR DRAWING)

STAGE 4
ORIENTATE BLOCKER WITH THE FRONT OF
WEDGE FACING THE REQUIRED DIRECTION.
(CURVED FACE TO INSECURE / IMPACT SIDE)
ENSURE THE BLOCKER IS SITTING FLAT AND LEVEL
AND THAT IT IS PARALLEL TO THE ROAD.
SECURE USING 6 OFF CHEMICAL ANCHORS.



STAGE 5
TERMINATE DUCTING INTO BLOCKER AND SEAL OFF.
POUR CONCRETE AROUND BLOCKER UP TO THE
UNDERSIDE OF THE TOP FRAME ANGLE
ENSURE BLOCKER DOES NOT MOVE DURING SECOND POUR.



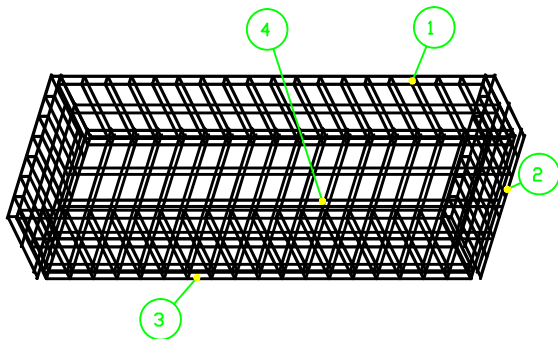
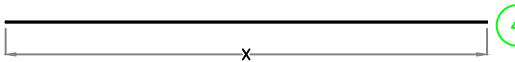
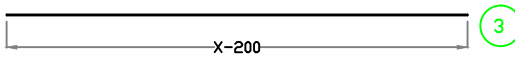
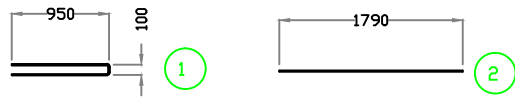
| | | DIM 'A' |
|-------------|------|---------|
| WEDGE WIDTH | 1.5 | 1910 |
| | 2M | 2410 |
| | 2.5 | 2910 |
| | 3M | 3410 |
| | 3.5 | 3910 |
| | 4M | 4410 |
| | 4.5 | 4910 |
| 5M | 5410 | |

ABC
Avon Barrier Corporation Ltd.
149 South Liberty Lane,
Ashton Vale Trading Est.
Bristol.
BS3 2TL.
UK.
T: +44 (0)117 953 5252
E: technical@avon-barrier.co.uk
W: www.avon-barrier.co.uk

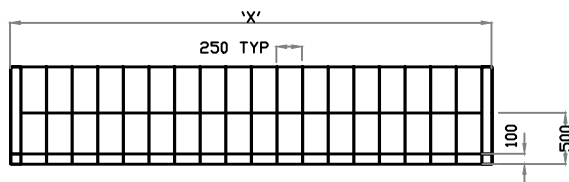
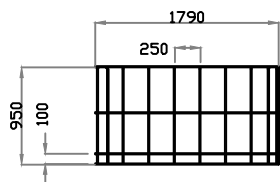
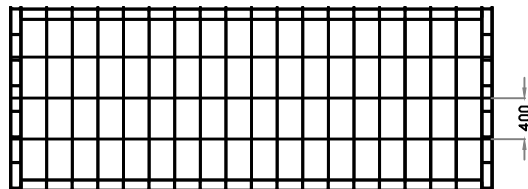
Drawing Title
**INSTALLATION
SEQUENCE
FOR RB700
ROAD BLOCKERS**

| ISSUE | REVISION | SIG. | DATE |
|-------|-------------|------|-------------|
| C | 1.5M ADDED | | M.J 5/7/12 |
| B | DIM A ADDED | | M.J 25/2/10 |
| A | REFERENCE | | M.J 1/6/09 |

| 3rd ANGLE PROJECTION | Tolerance | Used on | Drawn | Traced | Checked | Approved | Date | Scale |
|----------------------|----------------------------|---------------------------------|-------------|--------|---------|----------|------|-------|
| | ±10mm | RB700 | M.J | | T.S | T.S | 6/09 | NTS |
| IF IN DOUBT ASK | Material | Finish | Drawing No. | Stk. | of | Rev. | | |
| | C35 CONCRETE Ø12 RE-BAR | TROWELLED + FLAT ON CONCRETE | RB700-103 | 1 | 1 | C | | |



| | DIM 'X' |
|-----|---------|
| 1.5 | 2200 |
| 2M | 2700 |
| 2.5 | 3200 |
| 3M | 3700 |
| 3.5 | 4200 |
| 4M | 4700 |
| 4.5 | 5200 |
| 5M | 5700 |



| 4M | 4 | T12 | 6 | 00 | 4700 | 4700 | | |
|------|------|----------|-------|--------|------|------|-----|--|
| | 3 | T12 | 16 | 00 | 4500 | 4500 | | |
| | 2 | T12 | 50 | 00 | 1790 | 1790 | | |
| | 1 | T12 | 54 | 21 | 1960 | 950 | 100 | |
| ITEM | SIZE | QUANTITY | SHAPE | LENGTH | A | B | C | |

| 3M | 4 | T12 | 6 | 00 | 4700 | 3700 | | |
|------|------|----------|-------|--------|------|------|-----|--|
| | 3 | T12 | 16 | 00 | 4500 | 3500 | | |
| | 2 | T12 | 42 | 00 | 1790 | 1790 | | |
| | 1 | T12 | 46 | 21 | 1960 | 950 | 100 | |
| ITEM | SIZE | QUANTITY | SHAPE | LENGTH | A | B | C | |

| 2M | 4 | T12 | 6 | 00 | 4700 | 3700 | | |
|------|------|----------|-------|--------|------|------|-----|--|
| | 3 | T12 | 16 | 00 | 4500 | 3500 | | |
| | 2 | T12 | 34 | 00 | 1790 | 1790 | | |
| | 1 | T12 | 38 | 21 | 1960 | 950 | 100 | |
| ITEM | SIZE | QUANTITY | SHAPE | LENGTH | A | B | C | |

| 1.5M | 4 | T12 | 6 | 00 | 4700 | 3700 | | |
|------|------|----------|-------|--------|------|------|-----|--|
| | 3 | T12 | 16 | 00 | 4500 | 3500 | | |
| | 2 | T12 | 30 | 00 | 1790 | 1790 | | |
| | 1 | T12 | 34 | 21 | 1960 | 950 | 100 | |
| ITEM | SIZE | QUANTITY | SHAPE | LENGTH | A | B | C | |



Avon Barrier Corporation Ltd.
149 South Liberty Lane,
Ashton Vale Trading Est.
Bristol,
BS3 2TL,
UK.
T: +44 (0)117 953 5252
E: technical@avon-barrier.co.uk
W: www.avon-barrier.co.uk

Drawing Title

RB700
REBAR
SCHEDULE

| | | | | | | | | |
|-------|-----------------|-----|---------|-------|--------|---------|----------|------|
| C | 2M + 1.5M ADDED | M.J | 5/7/12 | Drawn | Traced | Checked | Approved | Date |
| B | 3M ADDED | M.J | 25/2/10 | M.J | | | T.S | T.S |
| A | NEW | M.J | 27/5/09 | | | | | 5/09 |
| ISSUE | REVISION | SIG | DATE | | | | | |

3rd ANGLE PROJECTION

±2mm

RB700_102

IF IN DOUBT ASK

COMPUTER GENERATED
DO NOT ALTER BY HAND

SEE TABLE

NONE

| Scale | Stk. | of | Rev. |
|-------|------|----|------|
| | 1 | 1 | C |