

GENERAL RULES FOR PRODUCT INSTALLATION AND MATERIALS USED WILL BE IN ACCORDANCE WITH BS EN 1992-1-1 "EUROCODE 2".

CONCRETE TO BE IN ACCORDANCE WITH BS EN 206-1 "CONCRETE SPECIFICATION, PERFORMANCE, PRODUCTION & CONFORMITY".

CONCRETE MIX GRADE IS C35, 20 AGGREGATE & 50 SLUMP.

SOIL BEARING CAPACITY MUST ACHIEVE 150KPa MINIMUM.

REINFORCING BAR IS IN ACCORDANCE WITH BS EN 4449 AND USED IN CONJUNCTION WITH BS EN 100080.

REINFORCING BAR GRADE IS 500MPa YIELD STRENGTH, NOTATION "H".

REINFORCING MESH FABRIC IS A193, 200mm SQ WITH 7mm WIRE.

1. CLEAR THE AREA DESIGNATED FOR THE PRODUCT FOUNDATIONS.
EXCAVATE 4M WIDE x 7.4M LONG x 390mm DEEP.

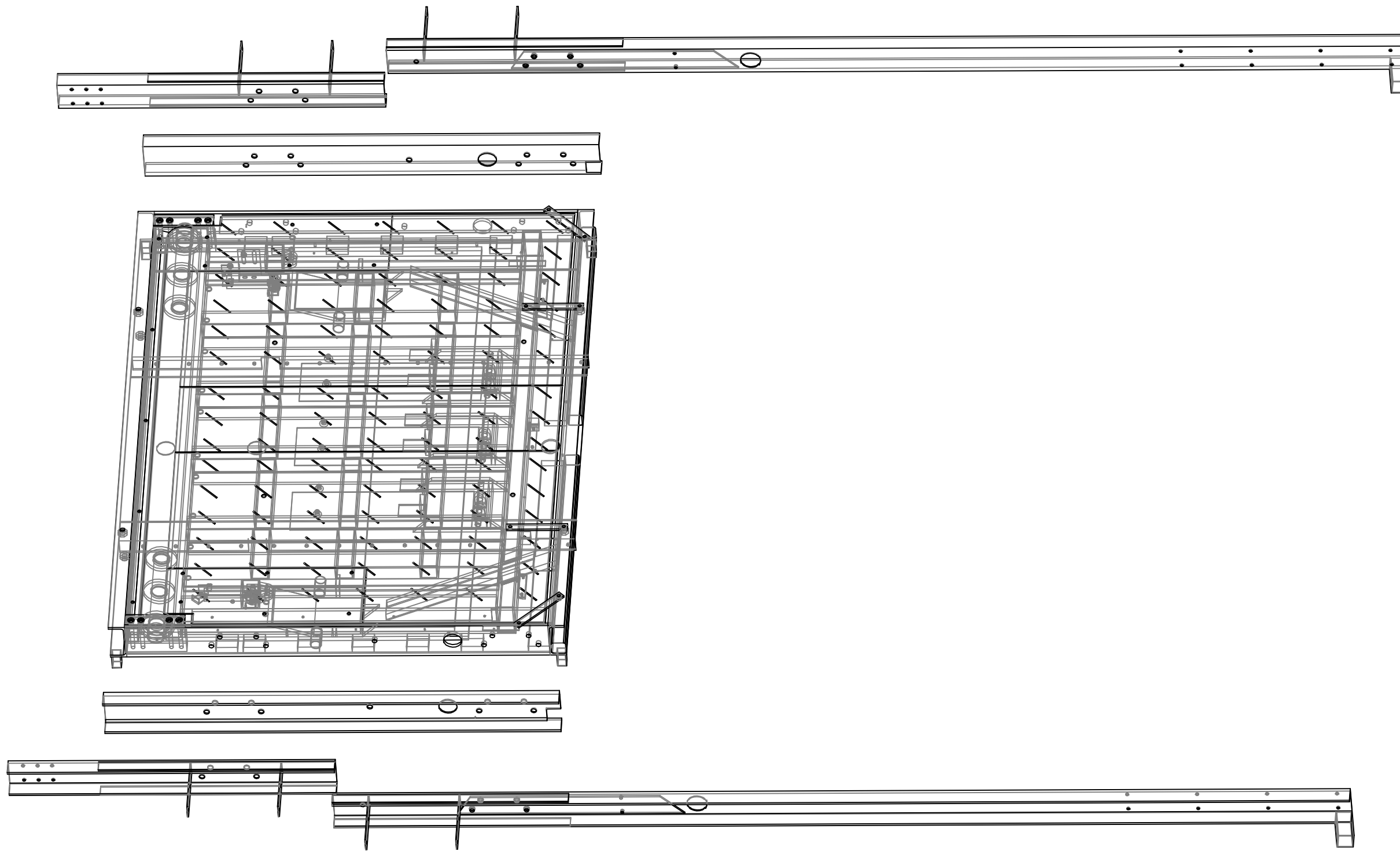
2. POSITION THE PRODUCT DRAINAGE DUCT.
THE DUCT CAN BE POSITIONED AT A, B, OR C TO SUIT SITE LAYOUT.
3. LEVEL OFF AND CHECK SOIL BEARING CAPACITY.
4. SHUTTER AND POUR CONCRETE 4M x 3M x 70mm DEEP.
THIS FIRST POUR IS THE PRODUCT MAIN PAD FOUNDATION.
5. LEAVE TO CURE THEN REMOVE SHUTTERING.

Avon Barrier Corporation Ltd.
149 South Liberty Lane,
Ashton Vale Trading Est.
Bristol.
BS3 2TL.
UK.
T: +44 (0)117 953 5252
E: technical@avon-barrier.co.uk
W: www.avon-barrier.co.uk

Drawing Title
**RB883CR
INSTALLATION**

B	100 DIAMETER DUCTS	M.J	11/3/15	Drawn	Traced	Checked	Approved	Date
A	MOD TO RB880_1_07	M.J	27/8/13	M.J		MPH	MPH	8/13
ISSUE	REVISION	SIG.	DATE					

3rd ANGLE PROJECTION	Tolerances	Used on	Drawing No.	RB883_102			
IF IN DOUBT ASK	COMPUTER GENERATED DO NOT ALTER BY HAND	Material	Finish	Scale	Sht.	of	Rev.
				NTS	1	4	B



6. ASSEMBLE BLOCKER SIDES & FOUNDATION CHANNELS BEFORE LIFTING INTO THE FOUNDATION AREA



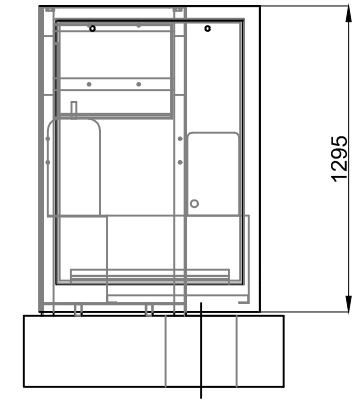
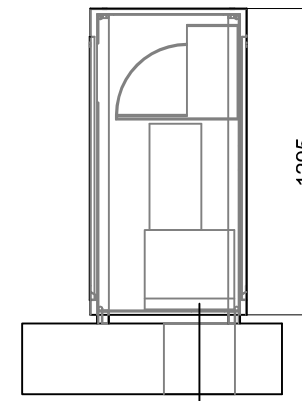
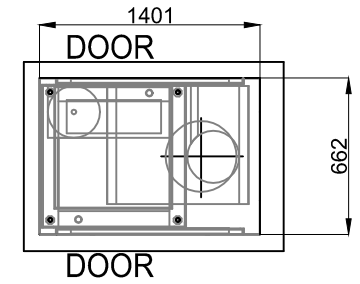
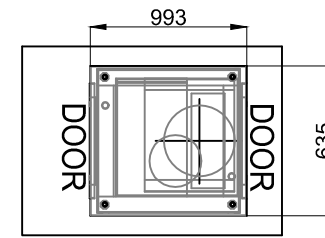
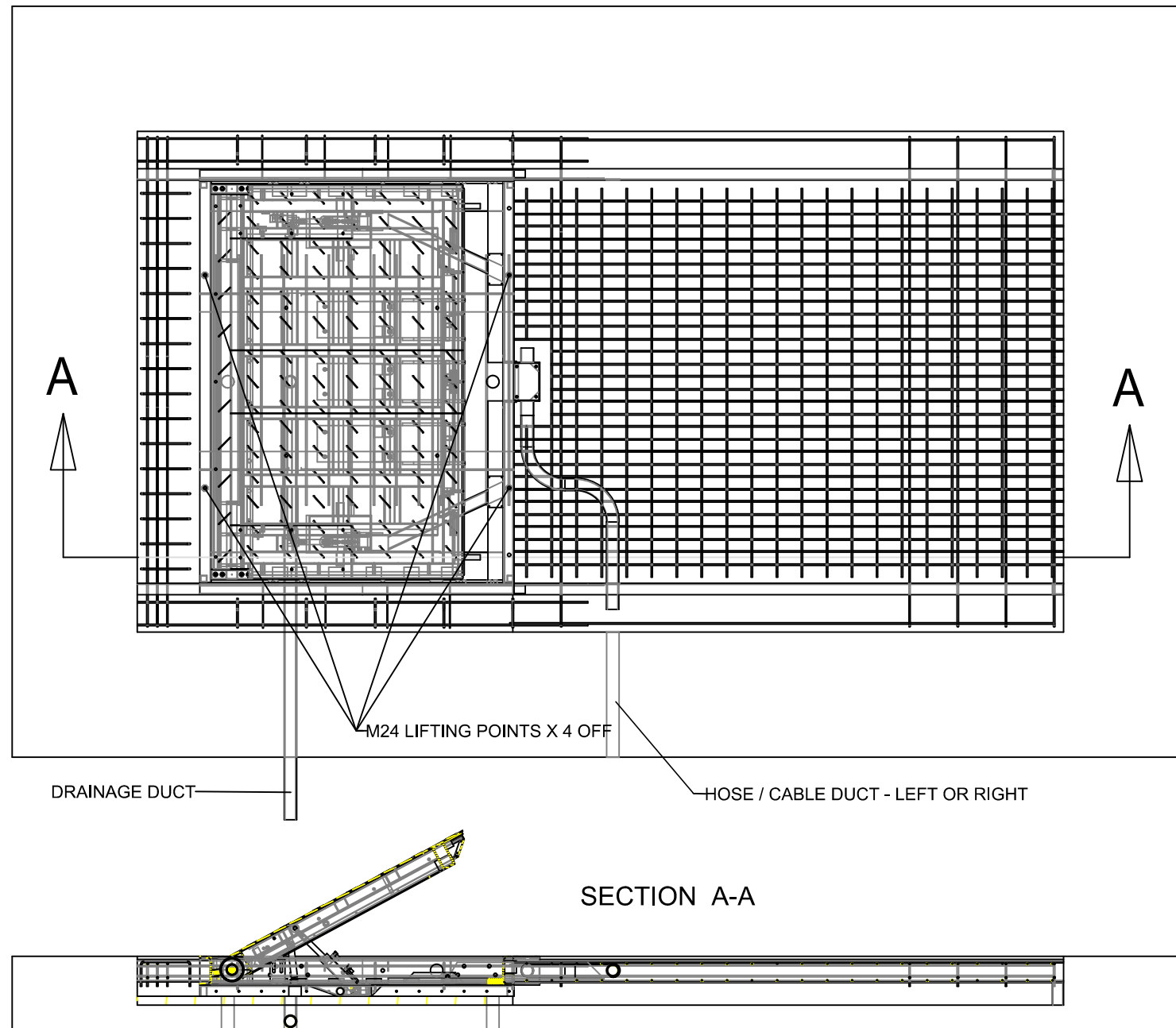
Avon Barrier Corporation Ltd.
 149 South Liberty Lane,
 Ashton Vale Trading Est.
 Bristol.
 BS3 2TL.
 UK.
 T: +44 (0)117 953 5252
 E: technical@avon-barrier.co.uk
 W: www.avon-barrier.co.uk

Drawing Title
 RB883CR
 INSTALLATION

A	MOD TO RB880_1_07	M.J	27/8/13	Drawn	Traced	Checked	Approved	Date
ISSUE	REVISION	SIG.	DATE	M.J		MPH	MPH	8/13

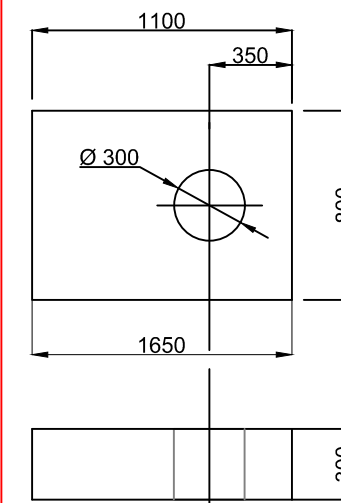
3rd ANGLE PROJECTION
 Tolerances
 Used on
 Drawing No. RB883_102

IF IN DOUBT ASK	COMPUTER GENERATED DO NOT ALTER BY HAND	Material	Finish	Scale	Sht.	of	Rev.
				NTS	2	4	B



STANDARD CABINET

FAST RAISE CABINET



HPU FOUNDATION



Avon Barrier Corporation Ltd.
149 South Liberty Lane,
Ashton Vale Trading Est.
Bristol.
BS3 2TL.
UK.
T: +44 (0)117 953 5252
E: technical@avon-barrier.co.uk
W: www.avon-barrier.co.uk

7. LIFT THE PRODUCT WITH ITS FIXED SIDES AND FOUNDATION AREA ENSURING THE ROAD BLOCKER IS LOCATED CENTRALLY OVER THE MAIN PAD FOUNDATION.

8. ADD REBAR (REF, RB883_102 SHEET 4).

9. INSTALL HOSE / CABLE DUCT.

10. POUR C35 CONCRETE AROUND THE UNIT TO FINISH LEVEL.

11. CONSTRUCT FOUNDATION FOR HPU CABINET. HPU SHOULD BE MOUNTED WITHIN 8 METRES FROM THE FRONT OF THE BLOCKER.

12. WHEN CURED, PULL CABLES AND HYDRAULIC HOSES THROUGH DUTS TO HPU BASE.

13. FIX HPU TO PREPARE BASE WITH M12 CHEMICAL ANCHOR BOLTS.

Drawing Title

**RB883CR
INSTALLATION**

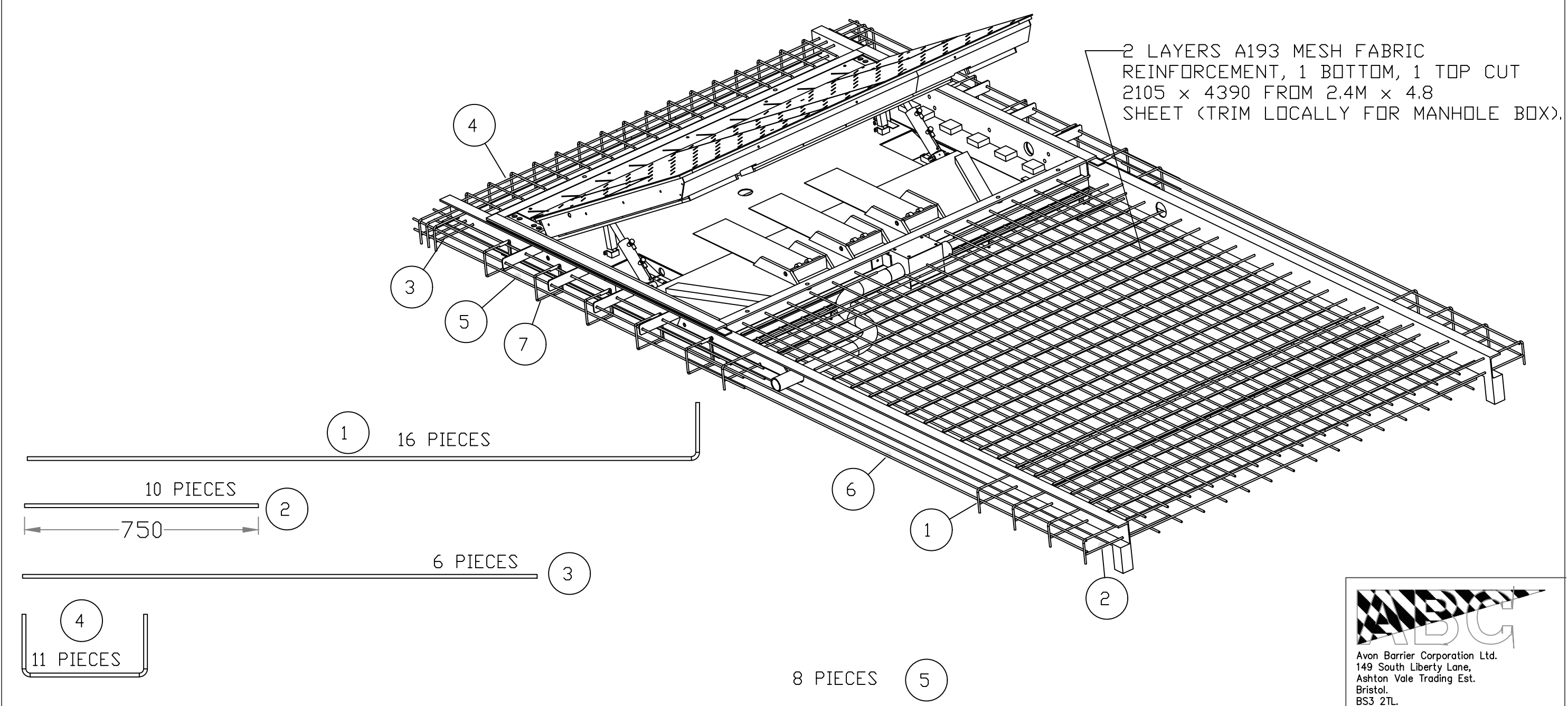
B	HPU CABINET DIMENSIONED	M.J	11/3/15	Drawn	Traced	Checked	Approved	Date
A	MOD TO RB880_1_07	M.J	27/8/13	M.J		MPH	MPH	8/13
ISSUE	REVISION	SIG.	DATE					

3rd ANGLE PROJECTION

IF IN DOUBT ASK

COMPUTER GENERATED
DO NOT ALTER BY HAND

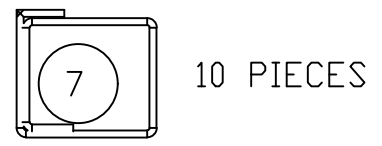
Tolerances	Used on	Drawing No.	RB883_102			
Material	Finish	Scale	Sh.	of	Rev.	
		NTS	3	4	B	



Avon Barrier Corporation Ltd.
 149 South Liberty Lane,
 Ashton Vale Trading Est.
 Bristol.
 BS3 2TL.
 UK.
 T: +44 (0)117 953 5252
 E: technical@avon-barrier.co.uk
 W: www.avon-barrier.co.uk

Drawing Title				
RB883CR REBAR				
Drawing No.				
RB883_102				
Scale	Sht.	of	Rev.	
NTS	4	4	B	

ITEM	SIZE	NO.	LENGTH	SHAPE	A	B	C	D
7	T8	10	925	51	225	190	80	(80)
6	T10	4	4350	00				
5	T10	8	3600	00				
4	T8	11	750	21	195	390	(195)	
3	T10	6	1650	00				
2	T10	10	750	00				
1	T10	16	2325	11	180	(2150)		



3rd ANGLE PROJECTION
 IF IN DOUBT ASK
 COMPUTER GENERATED
 DO NOT ALTER BY HAND

Tolerances		Used on	
Material		Finish	
A	MOD TO RB880_1_07	M.J	27/8/13
ISSUE	REVISION	SIG.	DATE