

LEGEND:

1. ELECTRO-MECHANICAL BARRIER EB750
 EXCEL MOTOR 0.375KW 230V 50HZ
 BELT DRIVE VIA GEARBOX, CONTROL
 VOLTAGE 24V DC. WINDING HANDLE
 FACILITY IN THE EVENT OF A POWER
 FAILURE. HINGED TOP LID (OPTIONALLY
 REMOVABLE). LOCKABLE SIDE COVER.
 4xM12x160 CHEMICAL ANCHORS.

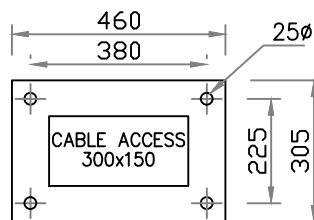
2. BOOM-RECTANGULAR SHAPED ALUM.
 76x38mm, POWDER COATED WHITE,
 RED FASCAL STRIPES 60x350mm AT
 750mm CENTRES WITH REINFORCEMENT
 AT FIXING POINT.

3. ALL DUCTING TO BE 50Ø MIN. UNLESS
 OTHERWISE SPECIFIED.

CABLE DETAILS

X DENOTES MAINS SUPPLY
 230V 1PH 6AMP. 3x2.5mm²

Y DENOTES CONTROL CABLE
 PUSH BUTTONS 6x1.5mm²
 SUBJECT TO SITE CONDITIONS.



Avon Barrier Corporation Ltd.
 149 South Liberty Lane,
 Ashton Vale Trading Est.
 Bristol,
 BS3 2TL,
 UK.
 T: +44 (0)117 953 5252
 E: technical@avon-barrier.co.uk
 W: www.avon-barrier.co.uk

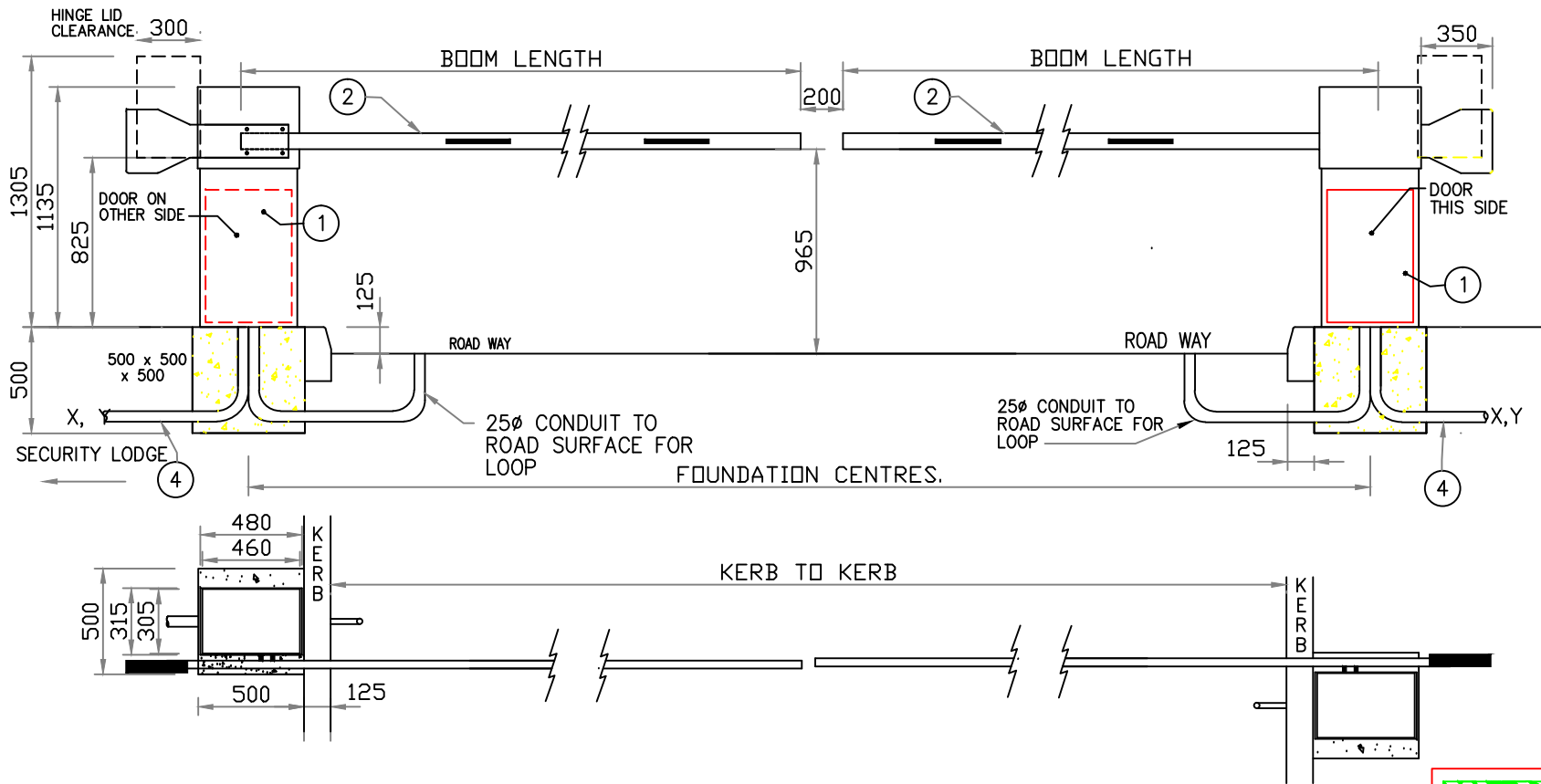
Drawing Title
**EB750 TANDEM OPERATION
 GENERAL ARRANGEMENT**

A	ISSUE FOR INFORMATION ONLY.	9/1/02
---	-----------------------------	--------

ISSUE	REVISION	SIG.	DATE
-------	----------	------	------

1st ANGLE PROJECTION
 COMPUTER GENERATED
 DO NOT ALTER BY HAND

Drawn	Traced	Checked	Approved	Date	Scale
NW	.	.	.	7/00	1:10 1:20
Drawing No.	Sht.	of	Rev.		
EB47S_100	1	1	A		



LEGEND:

1. ELECTRO-MECHANICAL BARRIER EB750 EXCEL MOTOR 0.375KW 230V 50HZ BELT DRIVE VIA GEARBOX, CONTROL VOLTAGE 24V DC. WINDING HANDLE FACILITY IN THE EVENT OF A POWER FAILURE. HINGED TOP LID (OPTIONALLY REMOVABLE). LOCKABLE SIDE COVER. 4xM12x160 CHEMICAL ANCHORS.

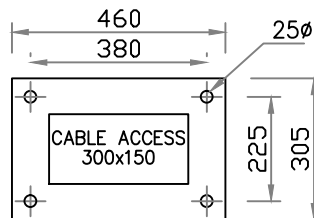
2. BOOM-RECTANGULAR SHAPED ALUM. 76x38mm, POWDER COATED WHITE, RED FASCAL STRIPES 60x350mm AT 750mm CENTRES WITH REINFORCEMENT AT FIXING POINT.

3. ALL DUCTING TO BE 50Ø MIN. UNLESS OTHERWISE SPECIFIED.

CABLE DETAILS

X DENOTES MAINS SUPPLY 230V 1PH 6AMP. 3x2.5mm²

Y DENOTES CONTROL CABLE PUSH BUTTONS 6x1.5mm² SUBJECT TO SITE CONDITIONS.

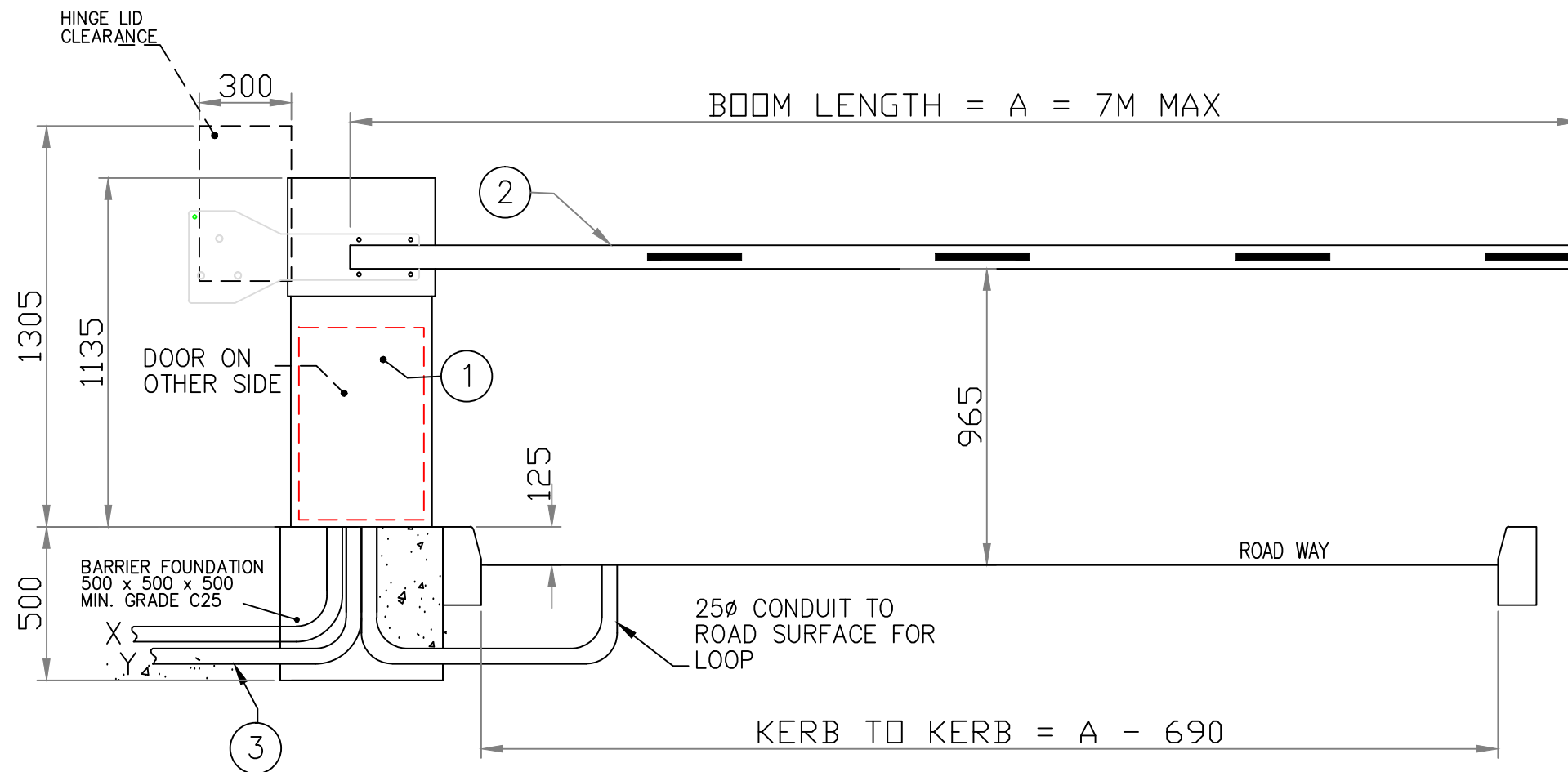


Avon Barrier Corporation Ltd.
149 South Liberty Lane,
Ashton Vale Trading Est.
Bristol.
BS3 2TL
UK.
T: +44 (0)117 953 5252
E: technical@avon-barrier.co.uk
W: www.avon-barrier.co.uk

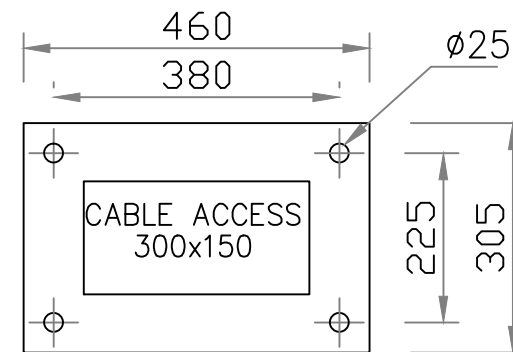
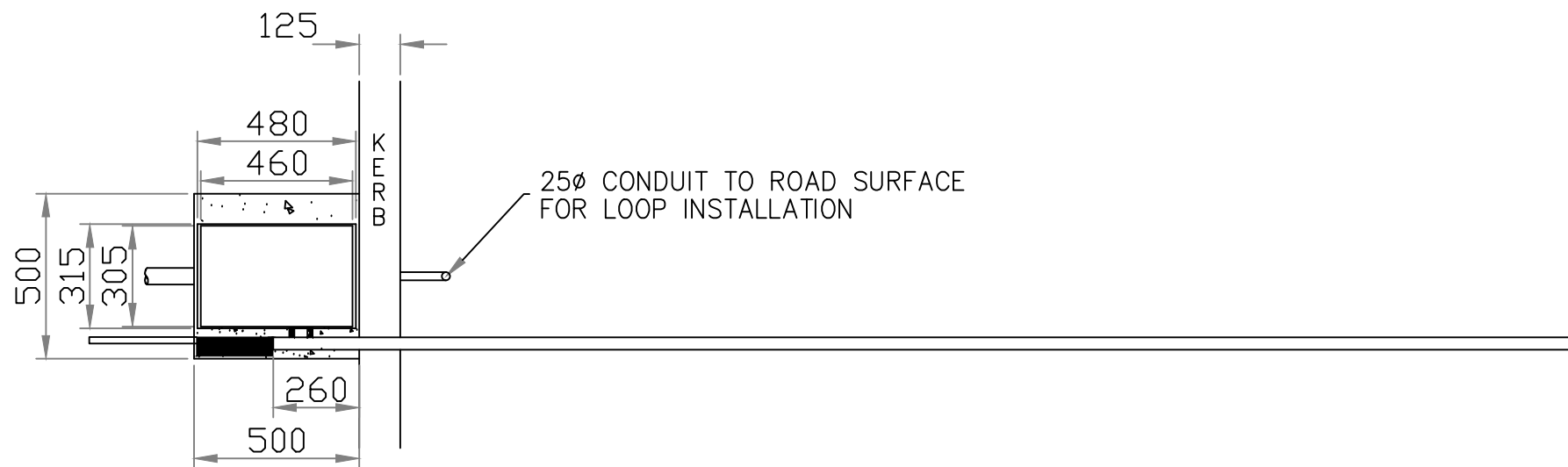
Drawing Title
**EB750 TANDEM OPERATION
GENERAL ARRANGEMENT**

A	ISSUE FOR INFORMATION ONLY.	9/1/02
ISSUE	REVISION	SIG. DATE

1st ANGLE PROJECTION		Used on	Drawn	Traced	Checked	Approved	Date	Scale
COMPUTER GENERATED DO NOT ALTER BY HAND		Material	NW	.	.	.	7/00	1:10 1:20
		Finish	Drawing No.	Sht.	of	Rev.		
			50/5/013	1	1	A		



COUNTERWEIGHTS TO SUIT CUSTOMER REQUIREMENTS:
I.E. LIGHT(S), SKIRT,
STOP SIGNS, POGO.



LEGEND:

1. ELECTRO-MECHANICAL BARRIER EB750 PARKING MOTOR 0.375KW 230V 50HZ DIRECT DRIVE VIA GEARBOX, CONTROL VOLTAGE 24V DC. WINDING HANDLE FACILITY IN THE EVENT OF A POWER FAILURE. HINGED TOP LID (OPTIONALLY REMOVABLE). LOCKABLE SIDE COVER. 4xM12x160 CHEMICAL ANCHORS.

2. BOOM-RECTANGULAR SHAPED ALUM. 76x38mm, POWDER COATED WHITE, RED REFLECTIVE STRIPES 60x350mm AT 750mm CENTRES WITH REINFORCEMENT AT FIXING POINT.

3. ALL DUCTING TO BE 50Ø MIN. UNLESS OTHERWISE SPECIFIED.

CABLE DETAILS

X DENOTES MAINS SUPPLY 230V 1PH 6AMP. 3x2.5mm²

Y DENOTES CONTROL CABLE PUSH BUTTONS 6x1.5mm² SUBJECT TO SITE CONDITIONS.

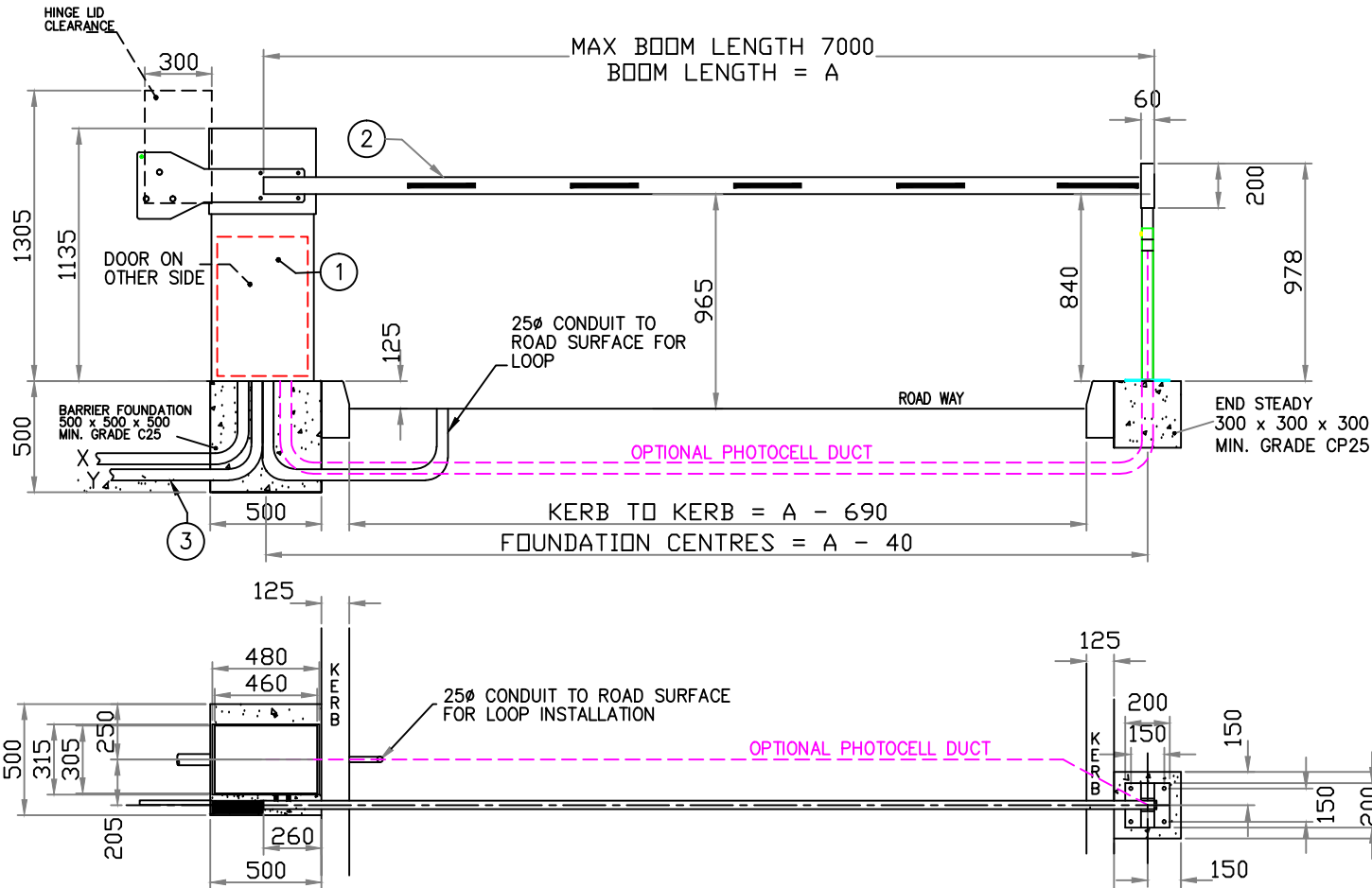


Avon Barrier Corporation Ltd.
149 South Liberty Lane,
Ashton Vale Trading Est.
Bristol.
BS3 2TL.
UK.
T: +44 (0)117 953 5252
E: technical@avon-barrier.co.uk
W: www.avon-barrier.co.uk

Drawing Title
AVON EB750 PARKING BARRIER,
(NO END STEADY)
FOUNDATION DETAIL
GENERAL ARRANGEMENT.

B	C25 WAS CP25	M.J	10/5/13
A	MOD TO 50/5/010	.	15/11/05
ISSUE	REVISION	SIG.	DATE

1st ANGLE PROJECTION	Tolerances	Used on	Drawn	Traced	Checked	Approved	Date	Scale
		.	M.J	.	.	.	11/05	NTS
COMPUTER GENERATED DO NOT ALTER BY HAND	Material	Finish	Drawing No.	Sht.	of	Rev.		
	.	.	EB750-6-01	1	1	B		



COUNTERWEIGHTS TO SUIT CUSTOMER REQUIREMENTS:
I.E. LIGHT(S), SKIRT,
STOP SIGNS, POGO.

LEGEND:

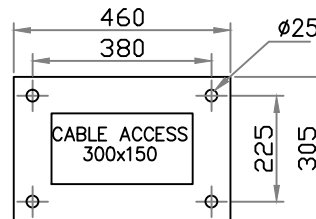
- ELECTRO-MECHANICAL BARRIER EB750 PARKING MOTOR 0.375KW 230V 50HZ DIRECT DRIVE VIA GEARBOX, CONTROL VOLTAGE 24V DC. WINDING HANDLE FACILITY IN THE EVENT OF A POWER FAILURE. HINGED TOP LID (OPTIONALLY REMOVABLE). LOCKABLE SIDE COVER. 4xM12x160 CHEMICAL ANCHORS.
- BOOM-RECTANGULAR SHAPED ALUM. 76x38mm, POWDER COATED WHITE, RED REFLECTIVE STRIPES 60x350mm AT 750mm CENTRES WITH REINFORCEMENT AT FIXING POINT.

- ALL DUCTING TO BE 50Ø MIN. UNLESS OTHERWISE SPECIFIED.

CABLE DETAILS

X DENOTES MAINS SUPPLY
230V 1PH 6AMP. 3x2.5mm

Y DENOTES CONTROL CABLE
PUSH BUTTONS 6x1.5mm
SUBJECT TO SITE CONDITIONS.



ISSUE	REVISION	SIG.	DATE
D	C25 WAS CP25	M.J	10/5/13
C	PHOTOCELL DUCT DIMENSIONED	M.J	8/4/13
B	OPTIONAL PHOTOCELL	M.J	20/8/10
A	MOD TO 50/5/010		15/11/05

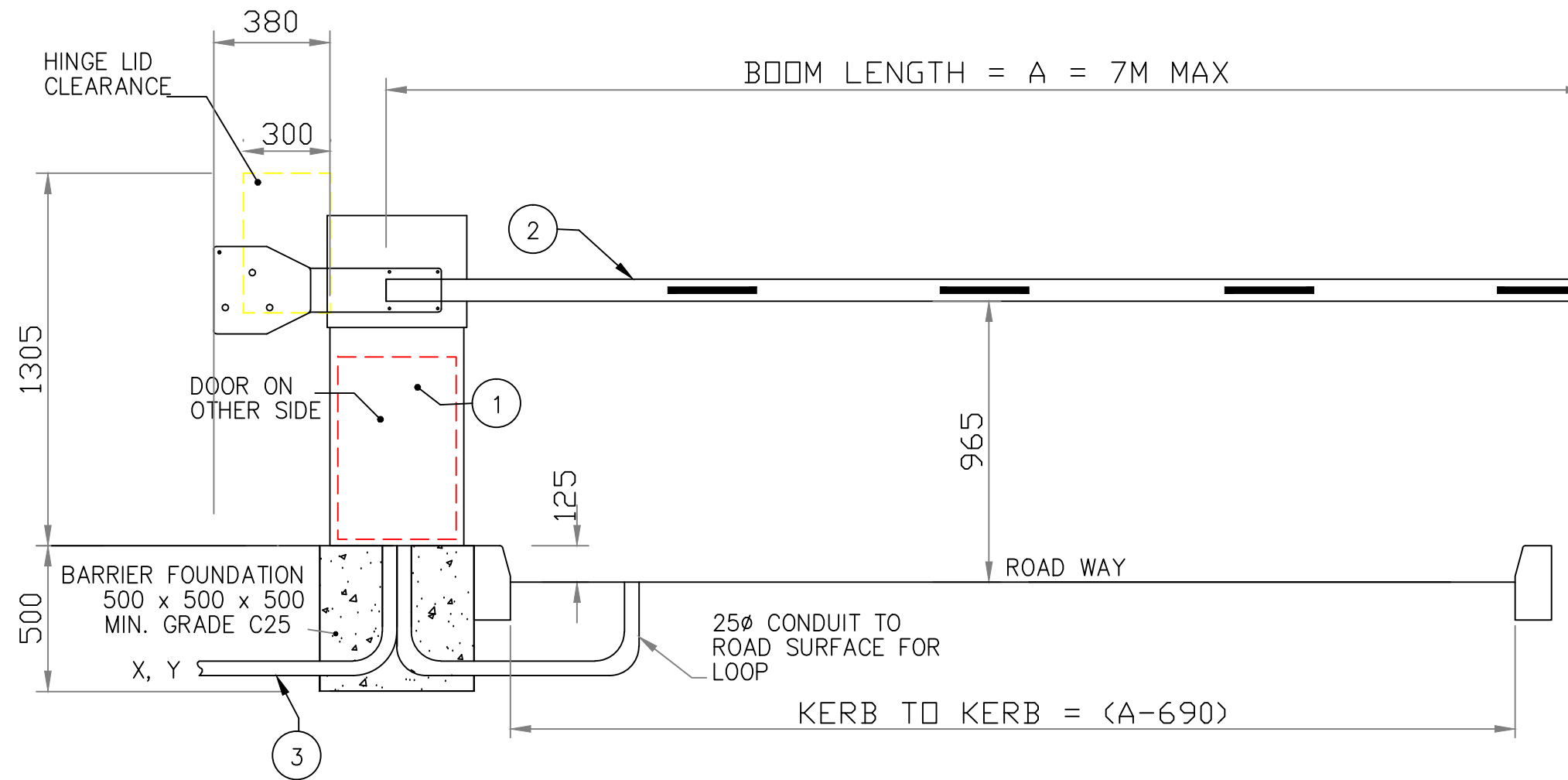
1st ANGLE PROJECTION

COMPUTER GENERATED
DO NOT ALTER BY HAND

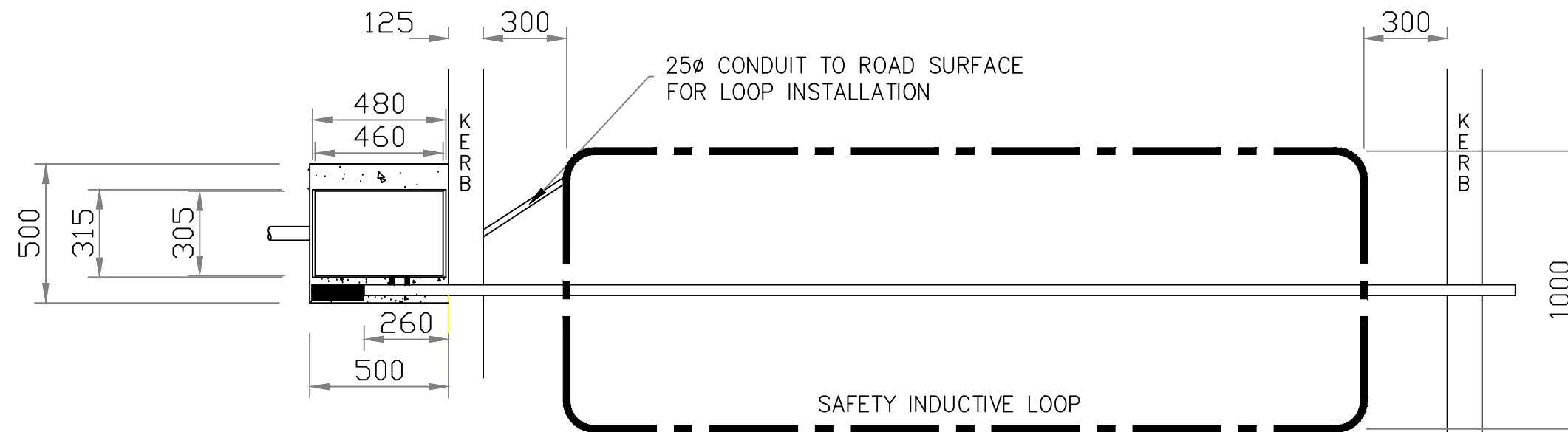
Tolerances	Used on	Drawn	Traced	Checked	Approved	Date	Scale
±2mm	-	M.J	-	-	T.S.	11/05	1:20
Material	Finish	Drawing No.	Sh.	of	Rev.		
BSEN 10025-1-2004 BSEN 10219-1-1997 BSEN 10029-1-1991	REF. W.I.	EB750-6-02	1	1	D		

Avon Barrier Corporation Ltd.
149 South Liberty Lane,
Ashton Vale Trading Est.
Bristol.
BS3 2TL.
UK.
T: +44 (0)117 953 5252
E: technical@avon-barrier.co.uk
W: www.avon-barrier.co.uk

Drawing Title
AVON EB750 PARKING BARRIER,
WITH END STEADY
FOUNDATION DETAIL
GENERAL ARRANGEMENT.



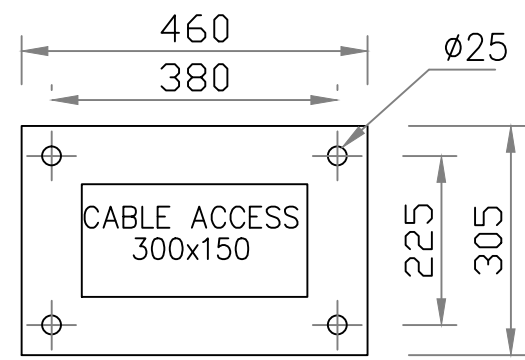
COUNTERWEIGHTS TO SUIT CUSTOMER REQUIREMENTS:
I.E. LIGHT(S), SKIRT,
STOP SIGNS, POGO.



LEGEND:

1. ELECTRO-MECHANICAL BARRIER EB750 PARKING MOTOR 0.375KW 230V 50HZ DIRECT DRIVE VIA GEARBOX, CONTROL VOLTAGE 24V DC. WINDING HANDLE FACILITY IN THE EVENT OF A POWER FAILURE. HINGED TOP LID (OPTIONALLY REMOVABLE). LOCKABLE SIDE COVER. 4xM12x160 CHEMICAL ANCHORS.
2. BOOM-RECTANGULAR SHAPED ALUM. 76x38mm, POWDER COATED WHITE, RED REFLECTIVE STRIPES 60x350mm AT 750mm CENTRES WITH REINFORCEMENT AT FIXING POINT.

3. ALL DUCTING TO BE 50Ø MIN. UNLESS OTHERWISE SPECIFIED.
- CABLE DETAILS**
- X DENOTES MAINS SUPPLY 230V 1PH 6AMP. 3x2.5mm²
- Y DENOTES CONTROL CABLE PUSH BUTTONS 6x1.5mm² SUBJECT TO SITE CONDITIONS.



Avon Barrier Corporation Ltd.
149 South Liberty Lane,
Ashton Vale Trading Est.
Bristol.
BS3 2TL.
UK.
T: +44 (0)117 953 5252
E: technical@avon-barrier.co.uk
W: www.avon-barrier.co.uk

Drawing Title
AVON EB750 PARKING BARRIER,
(NO END STEADY)
FOUNDATION DETAIL
GENERAL ARRANGEMENT.

B	C25 WAS CP25	M.J	10/5/13
A	MOD TO EB750-6-01	.	20/11/08
ISSUE	REVISION	SIG.	DATE

1st ANGLE PROJECTION	Tolerances	Used on	Drawn	Traced	Checked	Approved	Date	Scale
		.	M.J	.	.	.	11/08	NTS
COMPUTER GENERATED DO NOT ALTER BY HAND	Material	Finish	Drawing No.	Sht.	of	Rev.		
	.	.	EB750-6-03	1	1	B		