



## ROAD BLOCKER

# RB980CR Sabre Surface

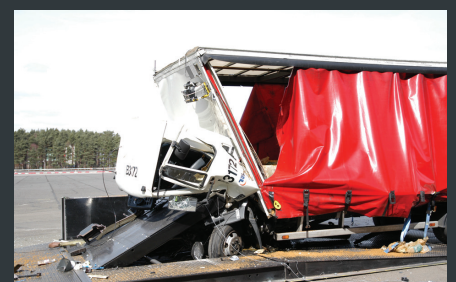
The Avon RB980CR Sabre Surface Road Blockers provide temporary high level protection where sub-surface foundations are not practical. The RB980CR is suitable as a high security control point for conferences or military checkpoints. Its fast deployment and high protection level makes the RB980CR ideal as a logistic support barrier for use in Theatre and support base protection.

Developed in conjunction with the British Military, our in-house engineering team designed these modular road blockers to combine ease of transportation and deployment with a high level of immediate protection.

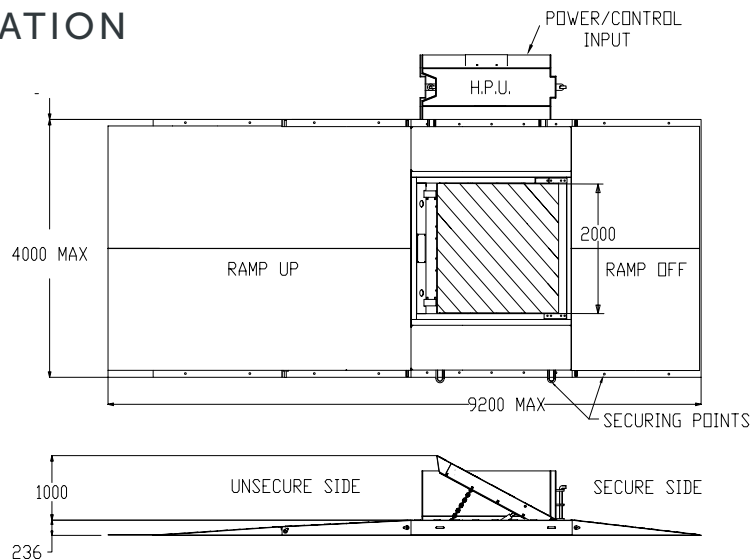
Independently physically tested in a number of full scale crash tests conducted in accordance with PAS 68 by the Transport Research Laboratory (TRL). The surface road blocker is an electro-hydraulically operated blocking system with a segment width of 2m. The unit has a significant 1m height when fully raised and is comprised of an RB880CR blocking system with side and approach ramps giving a standard 4m wide secured lane (can be modified to suit on request).



t: +44 (0) 117 953 5252  
e: [sales@avon-barrier.com](mailto:sales@avon-barrier.com)  
w: [www.avon-barrier.com](http://www.avon-barrier.com)



# PRODUCT SPECIFICATION



RB980CR SABRE SURFACE ROAD BLOCKER

## FEATURES

- » Multiple testing (4 different / independent tests)
- » Surface mounted road blocker - no foundations
- » Modular construction
- » Physically impact tested to PAS 68 criteria
- » Manufactured from heavy gauge materials
- » Manual hand pump facility
- » Programmable logic control system
- » 100% duty cycling

## BENEFITS

- » Comprehensive understanding of attack resistance
- » No foundation requirements
- » Fast deployment, operational within 1 hour (dependent on site conditions)
- » Strong and durable
- » Operational under power failure conditions
- » Flexibility to interface with all forms of access control
- » Reliable and dependable

### Physical Dimensions of Road Blocker (Single):

W - 4000mm | D - 9200mm | H - 240mm  
(Dimensions variable to suit site requirement)

### Physical Dimensions of HPU Cabinet (Single):

W - 2000mm | D - 1000mm | H - 1000mm  
(can also be smaller and positioned remote from Blocker)

### Basic Power Requirements:

3-Phase 415v AC, 50Hz,  
(other voltages are available)

### Control Voltage:

S.E.L.V 24v

### Performance:

Loading 20 Tonnes

### Impact Absorption:

1852KJ  
(fully operational immediately after impact)

### Full PAS 68 Classification:

V/7500(N2)/80/90:8.5/12.8

### Tested Model:

1m Hx2m W

### Speed of Operation:

6 Seconds to raise or lower

### Emergency Fast Operation (EFO) (option):

<1.5 seconds to raise (option)

### Operating temperature ranges available (option):

-25°C - +70°C

## OPTIONS AVAILABLE

- » Debris protection skirt
- » Emergency fast raise, lock down buttons
- » Accumulator systems for hydraulic operation in power failure conditions
- » Access and intercom systems
- » UPS backup for the electrical system
- » Traffic lights and back-indication system
- » Counter weight side barges
- » Roadway fixing bolts
- » Integral inset warning lights in blocking segment
- » LPS 1175 cabinets available for HPU