



BOLLARDS

SB970CR Scimitar Static

SB970CR Scimitar Static Bollard

The Avon SB970CR Scimitar Static Bollard is a PAS 68 impact rated fixed bollard, a high level of physical perimeter protection.

The bollard stands at 1m above finished foundation and can incorporate an optional dressing including block paving, tarmac or shingle, enabling the bollard to seamlessly integrate with surrounding environments.

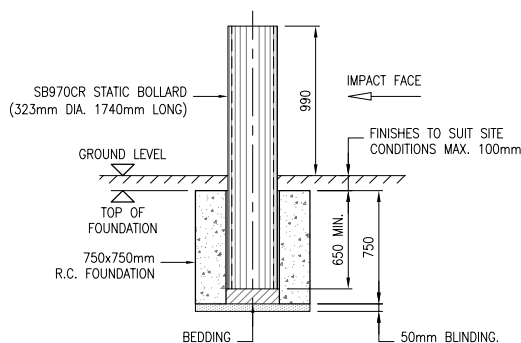
The bollard's foundation has been designed by experts in the field of PAS 68 & hostile vehicle mitigation.

The bollards can be installed on the perimeter line of buildings to create a stand off distance, and are ideal to restrict vehicle access to public areas, whilst allowing members of the public to move freely. A line of fixed bollards will prevent a vehicle from driving at force into an unauthorised area, such as the front of an airport terminal, sports stadium or a pedestrian retail area.

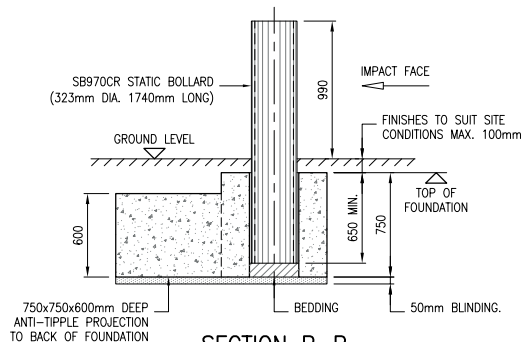


t: +44 (0) 117 953 5252
e: sales@avon-barrier.com
w: www.avon-barrier.com

PRODUCT SPECIFICATION



SECTION A-A



SECTION B-B

FEATURES

- » Multiple testing (single bollard / multiple bollards)
- » Unobtrusive appearance
- » Physically impact tested to PAS 68 criteria
- » Manufactured from heavy gauge materials

BENEFITS

- » Comprehensive understanding of attack resistance and confidence in individual bollard performance
- » Aesthetically acceptable
- » Ease of installation
- » Confidence in proven performance
- » Strong and durable

Physical Dimensions of Single Bollard:	W - 610mm D - 610mm H - 2000mm
Raised Height of Bollard:	1000mm
Performance	Loading 30 Tonnes
Impact Absorption:	Dual SB970CR - 1852KJ
Full PAS 68 Classification:	V/7500(N2)/80/90:0/25
Tested Model:	H - 990mm x W 323.9mm (+/-1%)

OPTIONS AVAILABLE

- » Stainless Steel Sleeves
- » Bespoke Sleeves
- » Mitre Top
- » Paint Options