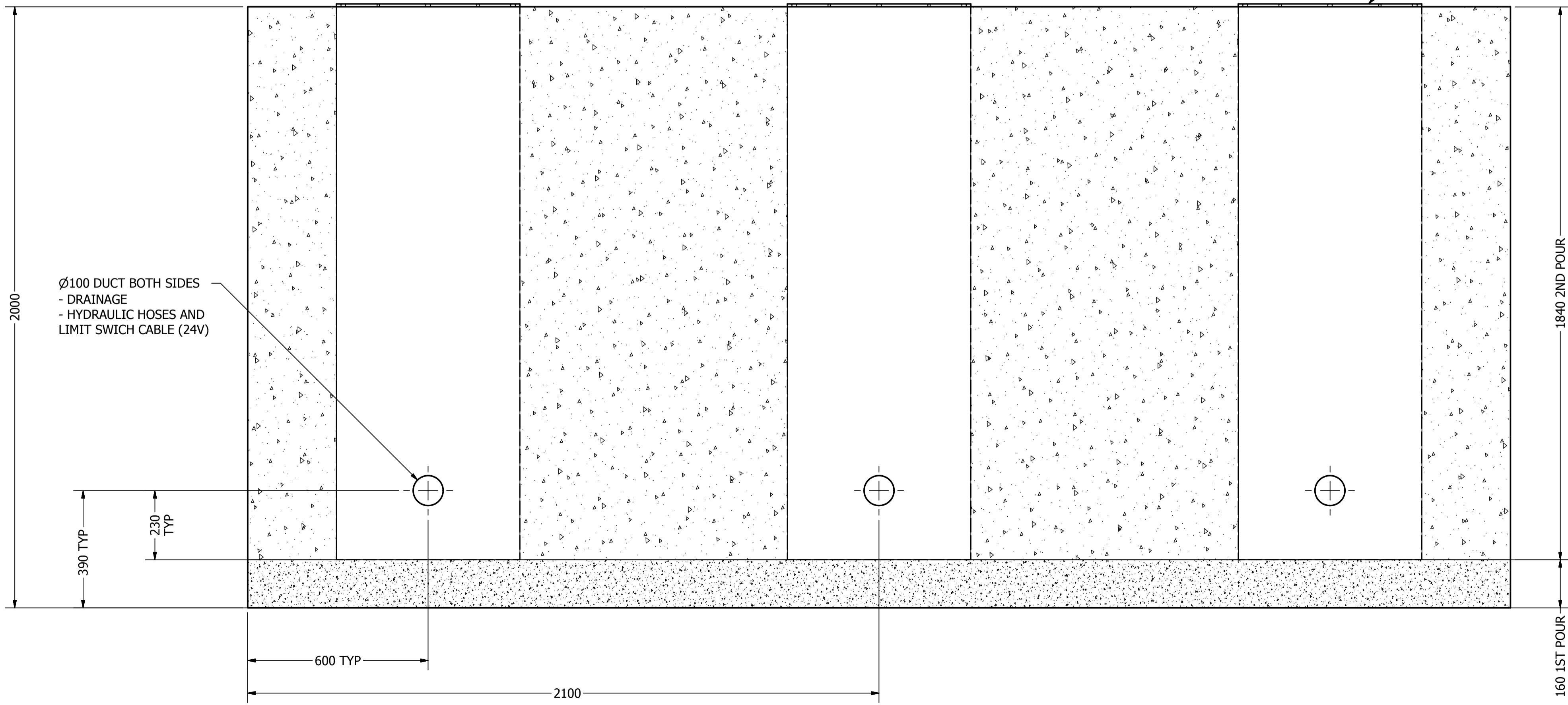
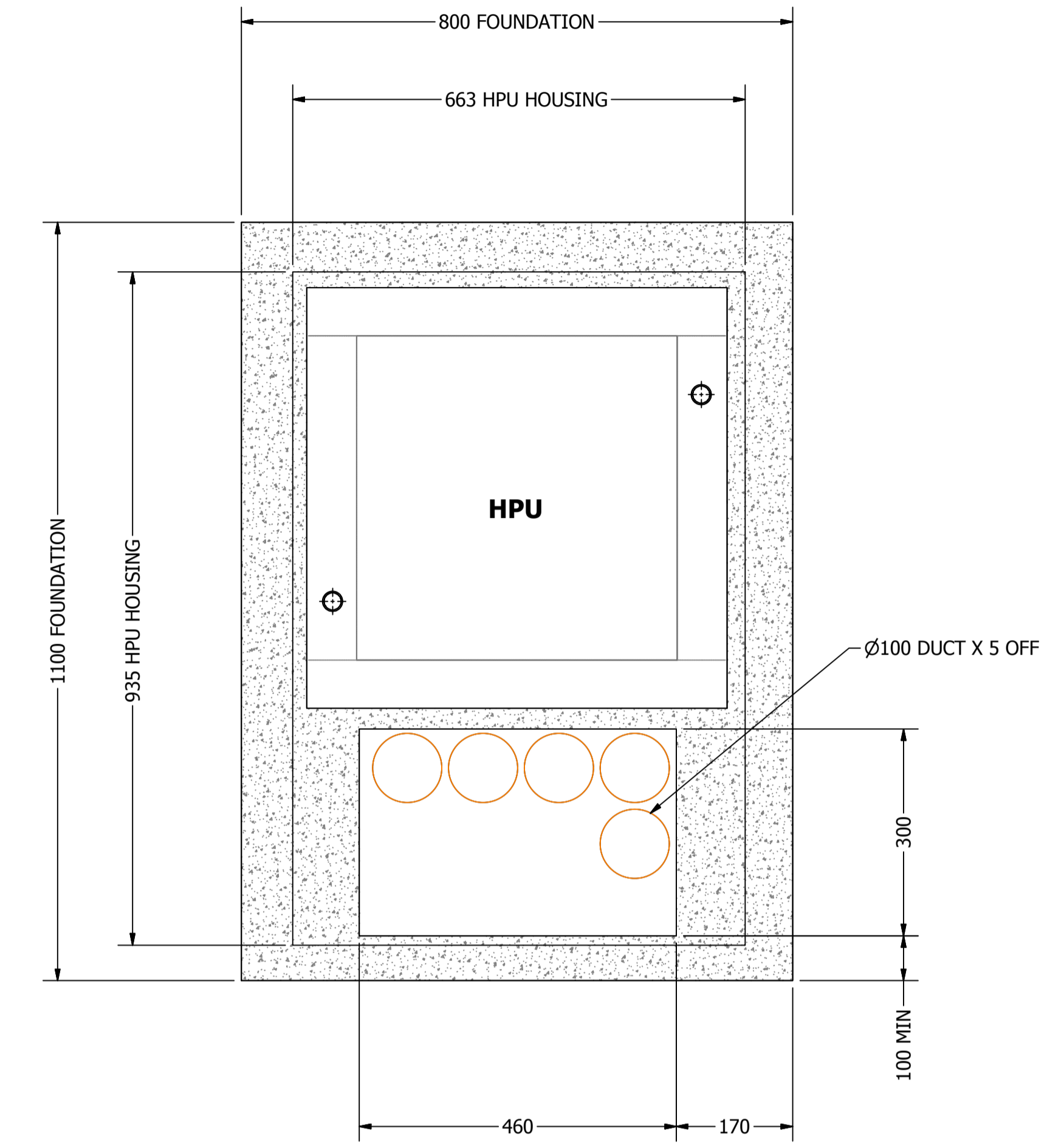
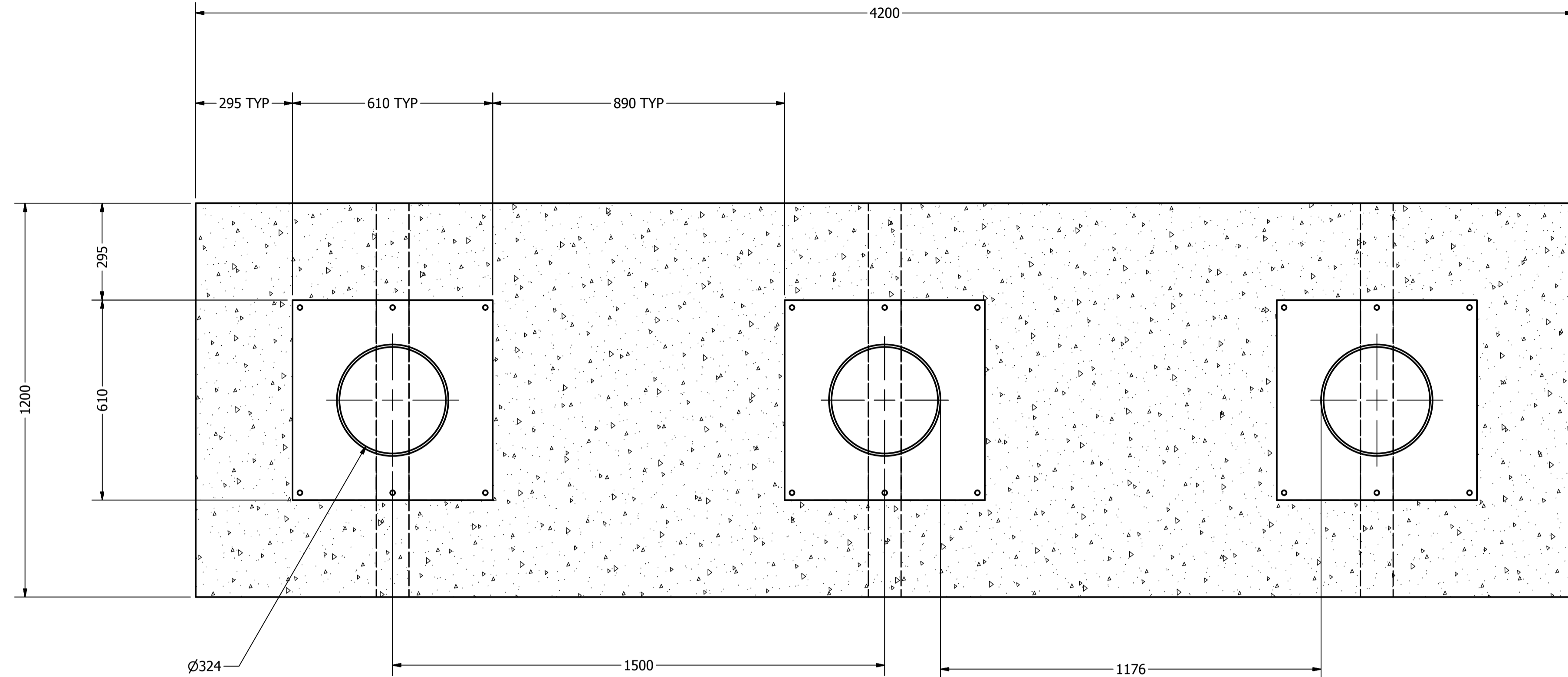


REVISION HISTORY				
REV	C.R. NUMBER	DESCRIPTION	DATE	APPROVED
1		INITIAL ISSUE	20/04/16	P.A.
2	CR66	MORE INFORMATION AND DETAILS	10/08/2016	P.A.



▽300 FOUNDATION DEPTH  
**HPU REFERENCE VIEW**  
**SCALE NTS**

- NOTES:
- TRIPLE BOLLARD ARRANGMENT: PIT 4200 X 1200 ▽ 2000
  - HPU: PIT 1100 X 800 ▽ 300
  - C35 CONCRETE
  - T10 REBAR, 150mm SQ. SEE SB970CR REBAR DWG
  - FIRST POUR MUST BE FLAT WITH A TROWELED FINISH AND LEVEL
  - HYDRAULIC DUCT TO HAVE SWEEPING BENDS
  - DRAINAGE DUCT IN ACCORDANCE WITH LOCAL REQUIREMENTS

UNSPECIFIED TOLERANCE - (mm)	MATERIAL	MATERIAL CODE	FINISH	MASS (Kg)	SCALE	 Complete copyright of Avon Barrier Corporation Ltd.	DESIGNED	DESIGNED DATE	DWG CHECK	ENG CHECK
DECIMALS 0 ± (1)    ANGULAR ± (0.5°) X ± (0.3) XX ± (0.1)	N/A	BSEN 10025 : L.I BSEN 10219 : L.I BSEN 10029 : L.I	N/A	N/A	1 : 10		Avon Barrier Corporation Ltd. 149 South Liberty Lane, Ashton Vale Trading Estate, Bristol. BS3 2TL. UK. T: +44 (0) 117 953 5252 F: +44 (0) 117 953 5353 E: technical@avon-barrier.co.uk W: www.avon-barrier.co.uk	P.ATAMANIUK	20/04/2016	
TITLE							SB970CR TRIPLE BOLLARD FOUNDATION			
PART NUMBER							SB970CR TRIPLE			
DRAWING STATUS		SHEET SIZE		SHEET NUMBER		REVISION				
A		A1		1 / 1				2		